



# SPACE CORPS™ - CENTURION™

5324/7291

EstesRockets.com



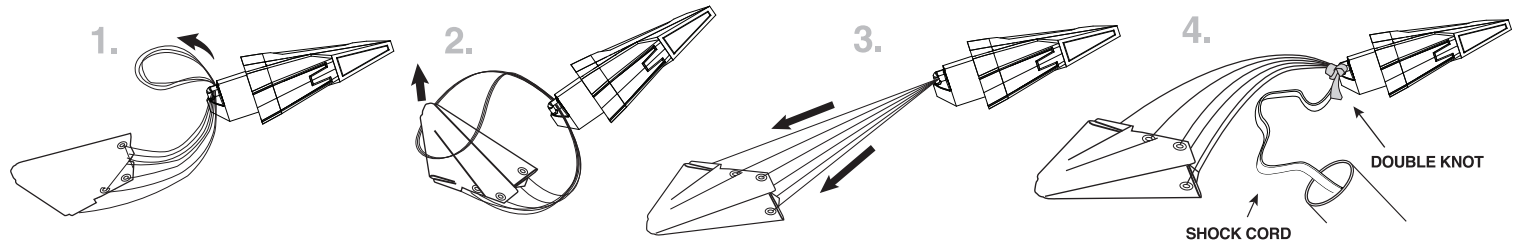
READY TO FLY MODEL ROCKET INSTRUCTIONS

KEEP FOR FUTURE REFERENCE

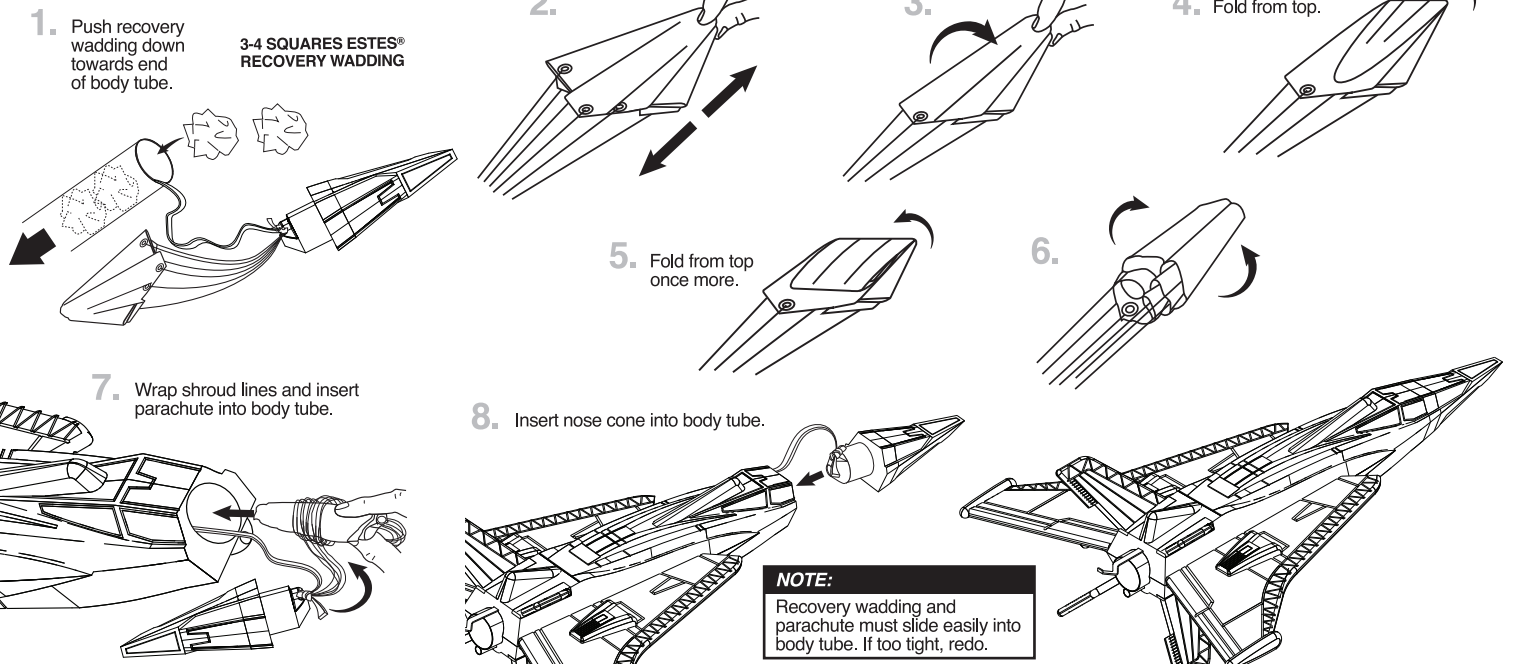
IMPORTANT: Please record date found on decal and keep for future reference. \_\_\_\_\_

READ ALL INSTRUCTIONS. Make sure you have all parts and supplies. Product color and shape may vary.

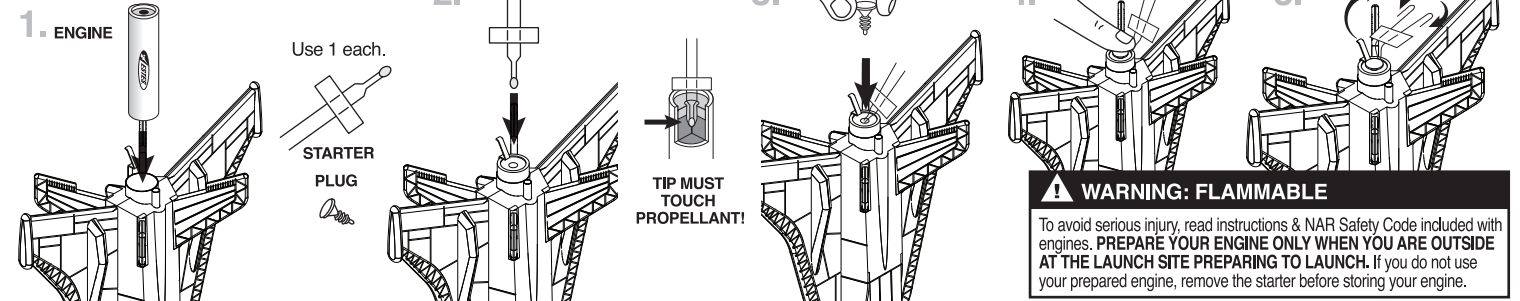
## ATTACH PARACHUTE & SHOCK CORD



## PREPARE FLIGHT RECOVERY



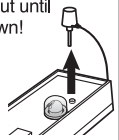
## PREPARE ENGINE



# COUNTDOWN AND LAUNCH

**NOTE:**

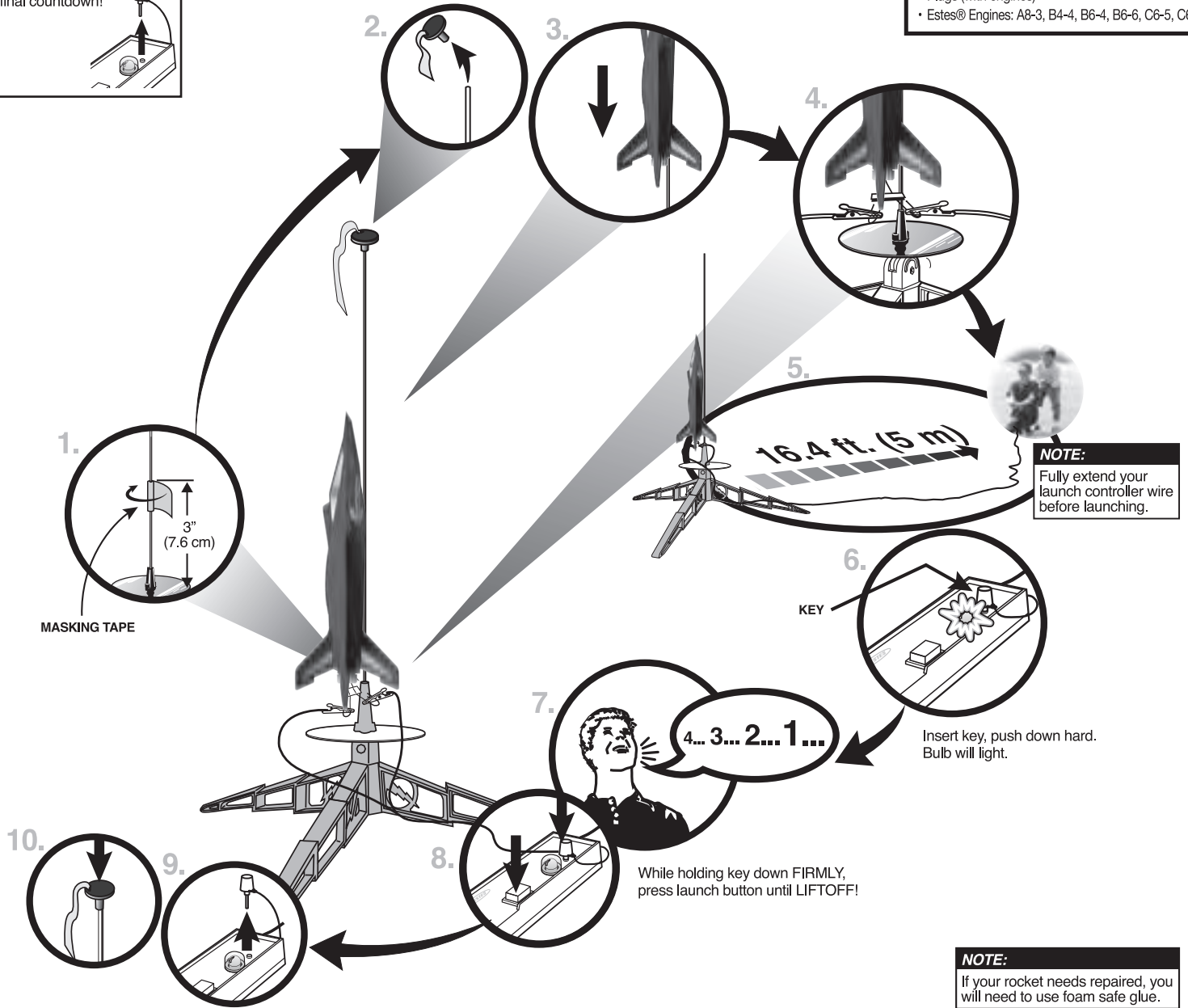
Key always out until final countdown!



**ESTES® LAUNCH SUPPLIES NEEDED**

(Sold Separately)

- Launch Pad
- Launch Controller
- Starters (with engines)
- Plugs (with engines)
- Estes® Engines: A8-3, B4-4, B6-4, B6-6, C6-5, C6-7



Est. weight: 1.4 oz, 39.7g

## PRECAUTIONS



NAR Safety Code



NO DRY GRASS OR WEEDS

**PRE-LAUNCH CHECK:** For safety, never launch a damaged rocket. Check the rocket body, nose cone and fins. Also, check the engine mount, recovery system and launch lug(s). Repair any damage before launching the rocket.

**FLYING YOUR ROCKET:** Choose a large field (500 ft. [152 m] square) free of dry weeds and brown grass. The larger the launch area, the better your chance of recovering your rocket. Football fields and playgrounds are great. Launch only with little or no wind and good visibility. Always follow the National Association of Rocketry NAR SAFETY CODE (enclosed).

**MISFIRES:** TAKE THE KEY OUT OF THE CONTROLLER. WAIT ONE MINUTE BEFORE GOING NEAR THE ROCKET. Disconnect the micro-clips and remove the engine. Take the plug and starter out of the engine. A burned starter means the starter tip was not touching engine propellant. Install a new starter; be sure the tip is touching propellant inside the engine. Push the plug in place. Repeat steps under Countdown and Launch.