



EstesRockets.com

# SUN-SATIONAL™

0899

AGES  
10+



Skill Level

**BEGINNER**

## MODEL ROCKET INSTRUCTIONS

KEEP FOR FUTURE REFERENCE

**IMPORTANT:** Record date found on decal and keep for future reference: \_\_\_\_\_. Read all instructions. Make sure you have all parts and supplies.

### SUPPLIES



SCISSORS



PENCIL



RULER



YELLOW GLUE



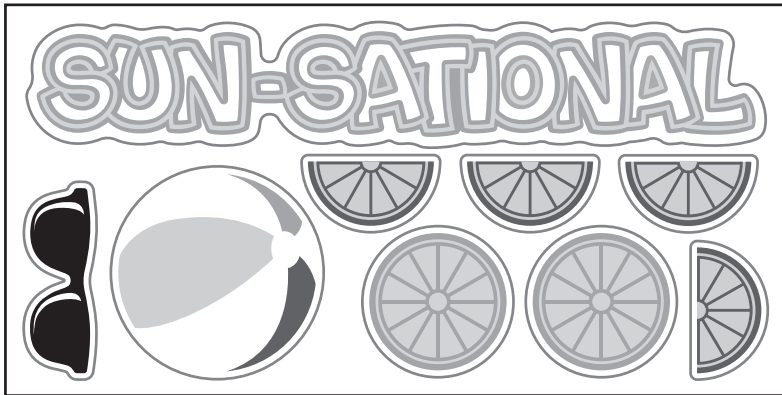
HOBBY KNIFE



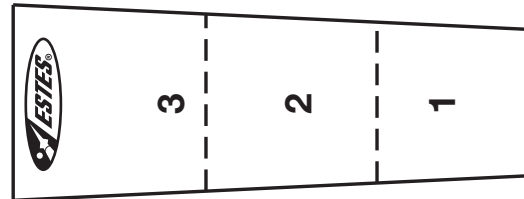
MASKING TAPE



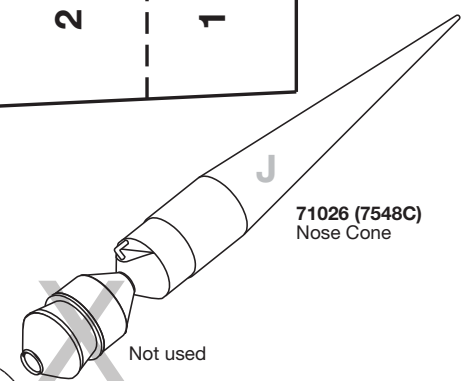
PLASTIC CEMENT



090001-0899  
Self-Stick Decal Sheet

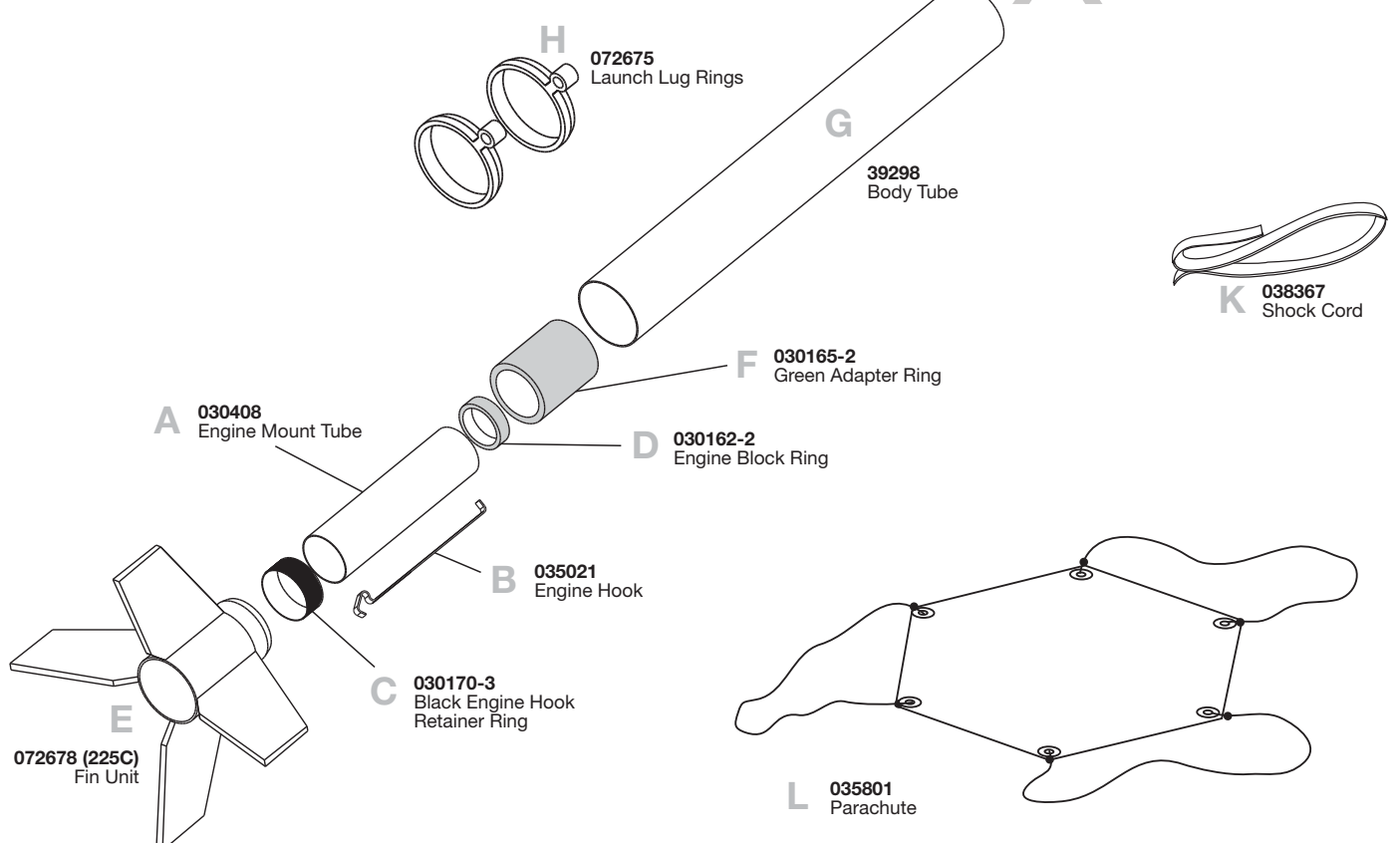


I Shock Cord Mount



71026 (7548C)  
Nose Cone

Not used



H 072675  
Launch Lug Rings

G 39298  
Body Tube

K 038367  
Shock Cord

F 030165-2  
Green Adapter Ring

A 030408  
Engine Mount Tube

D 030162-2  
Engine Block Ring

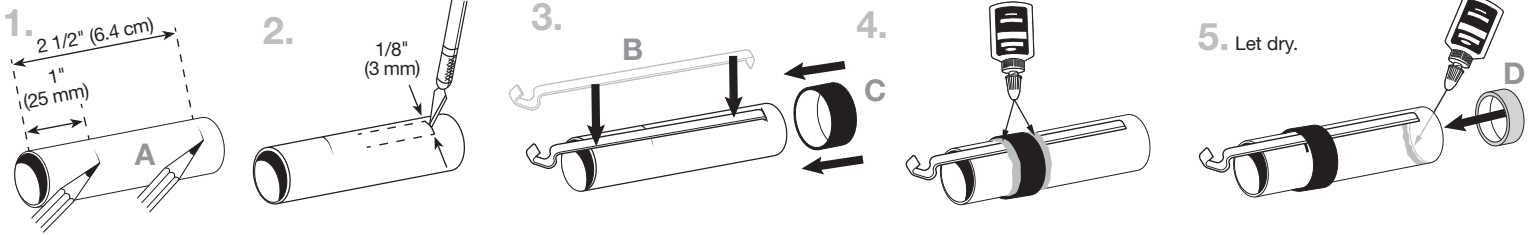
B 035021  
Engine Hook

C 030170-3  
Black Engine Hook Retainer Ring

E 072678 (225C)  
Fin Unit

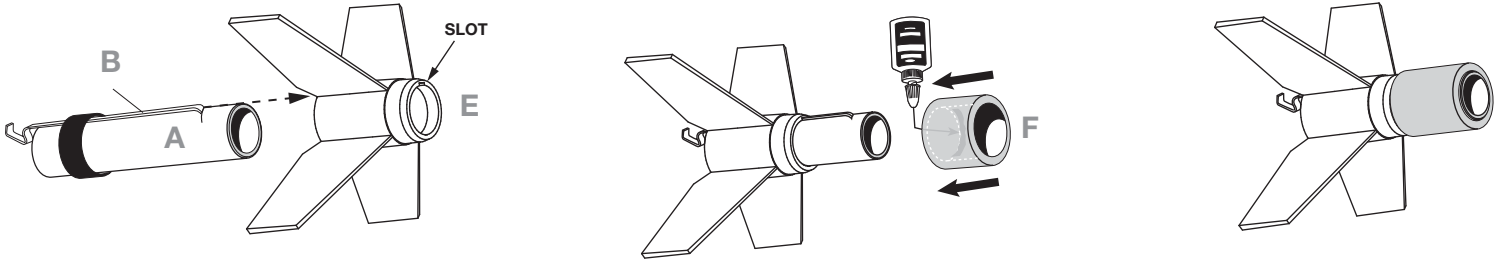
L 035801  
Parachute

## ASSEMBLE ENGINE MOUNT

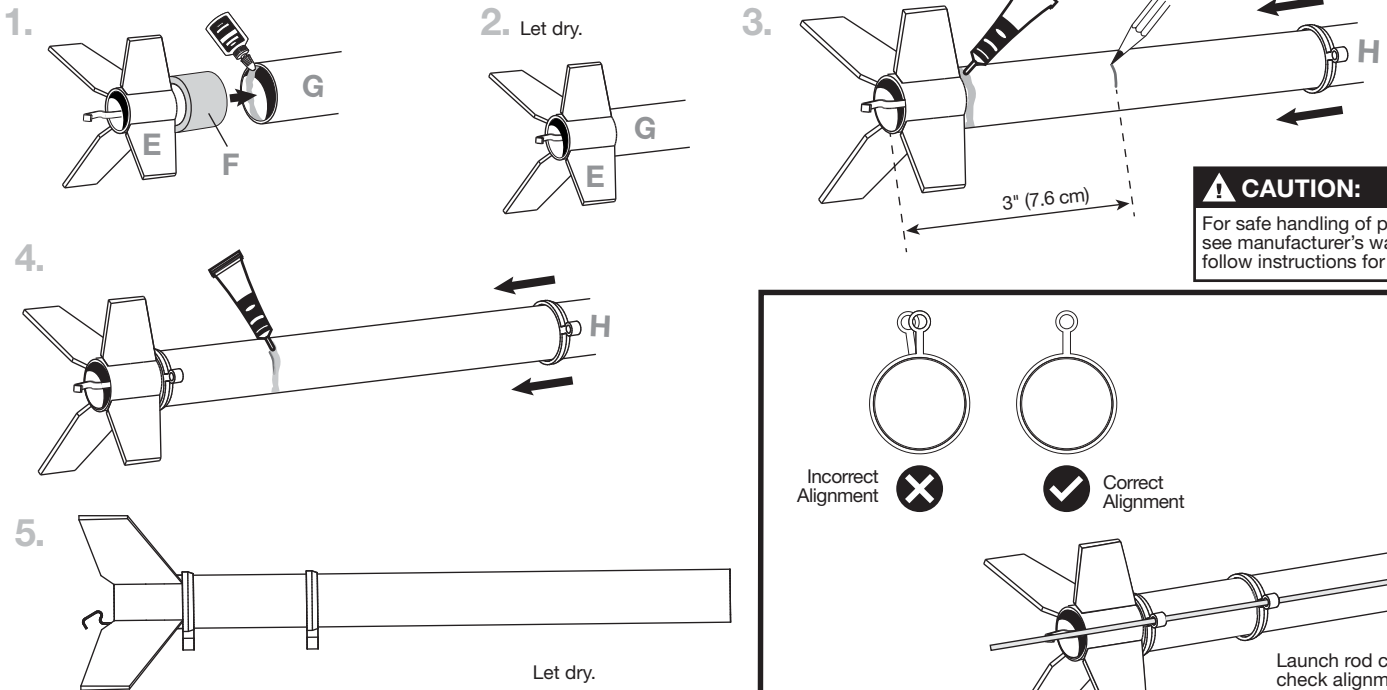


## INSTALL ENGINE MOUNT

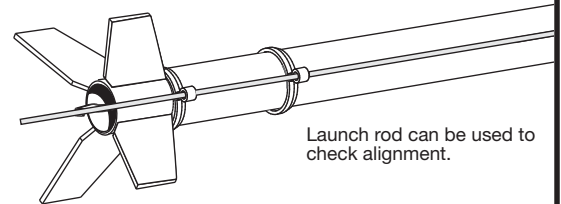
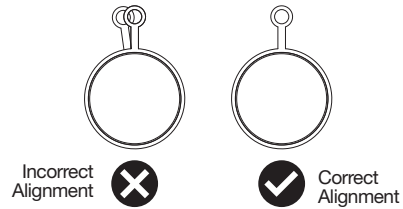
1. Align B with slot in E. Slide engine mount assembly into E until the ends of A and E are even.
2. Apply ring of glue inside end of F. While holding engine mount assembly in place, push F over engine mount assembly until it stops.



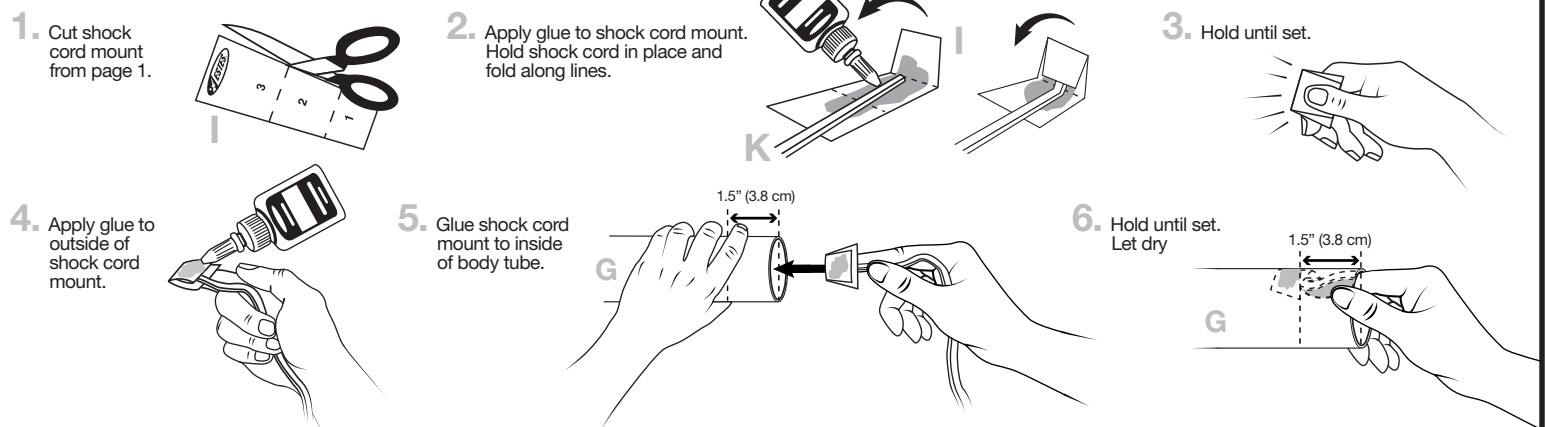
## ATTACH BODY TUBE



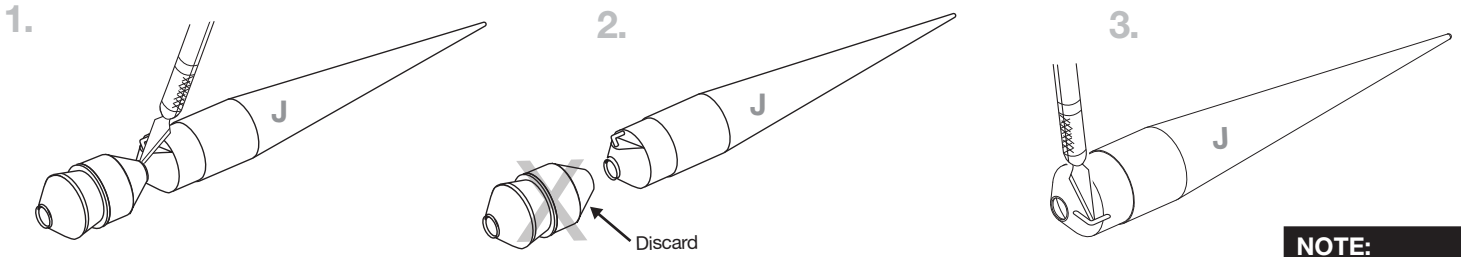
**CAUTION:**  
For safe handling of plastic cement, see manufacturer's warnings and follow instructions for use.



## ATTACH SHOCK CORD

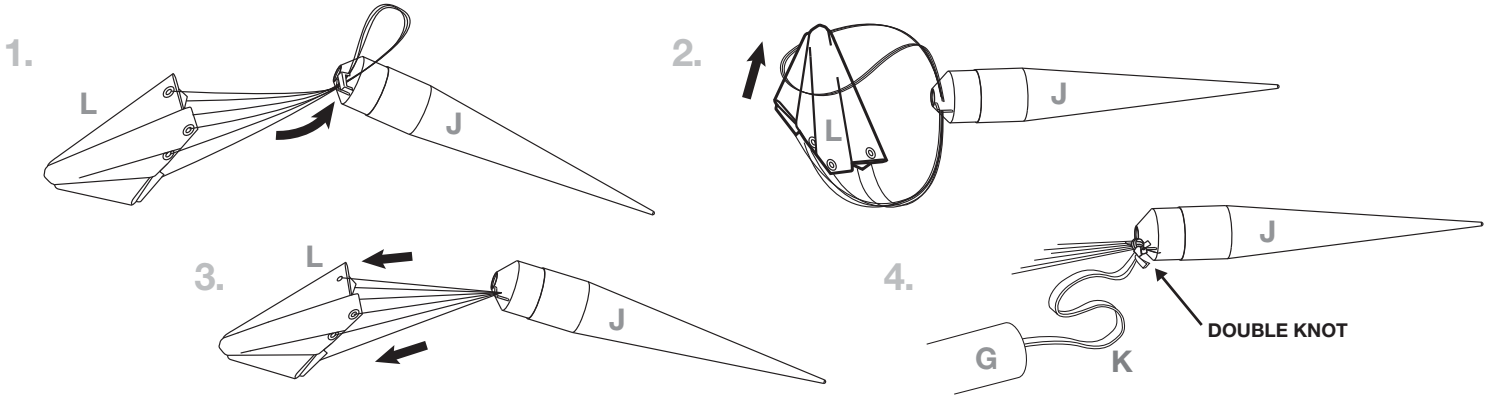


## PREPARE NOSE CONE

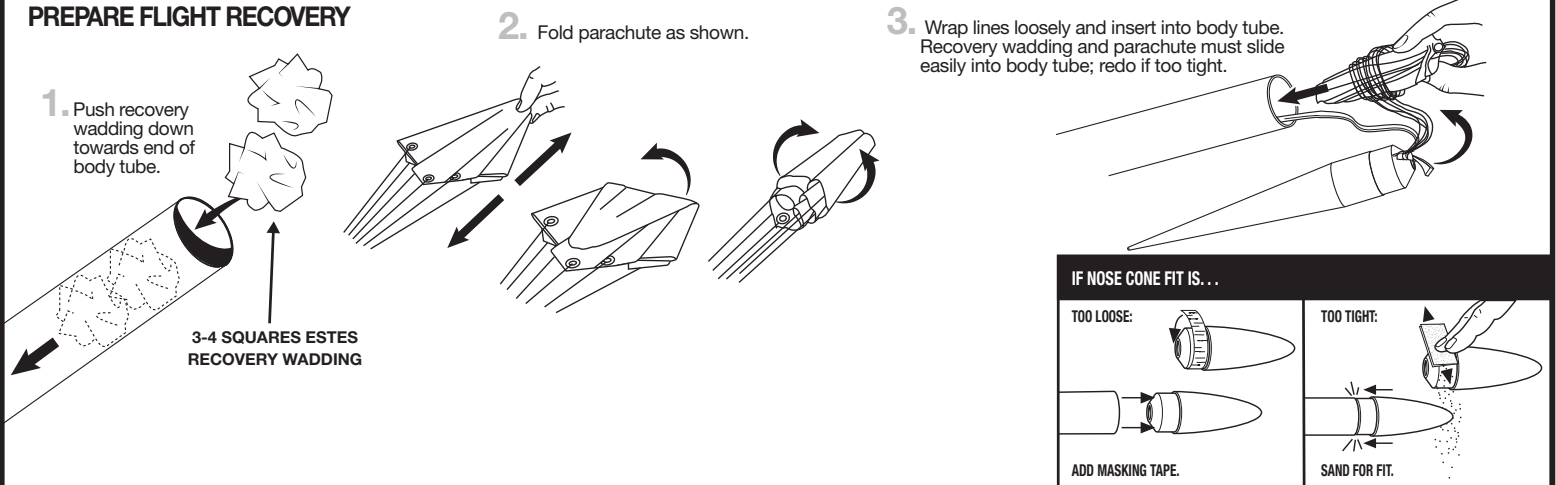


**NOTE:**  
Do not cut off eyelet.

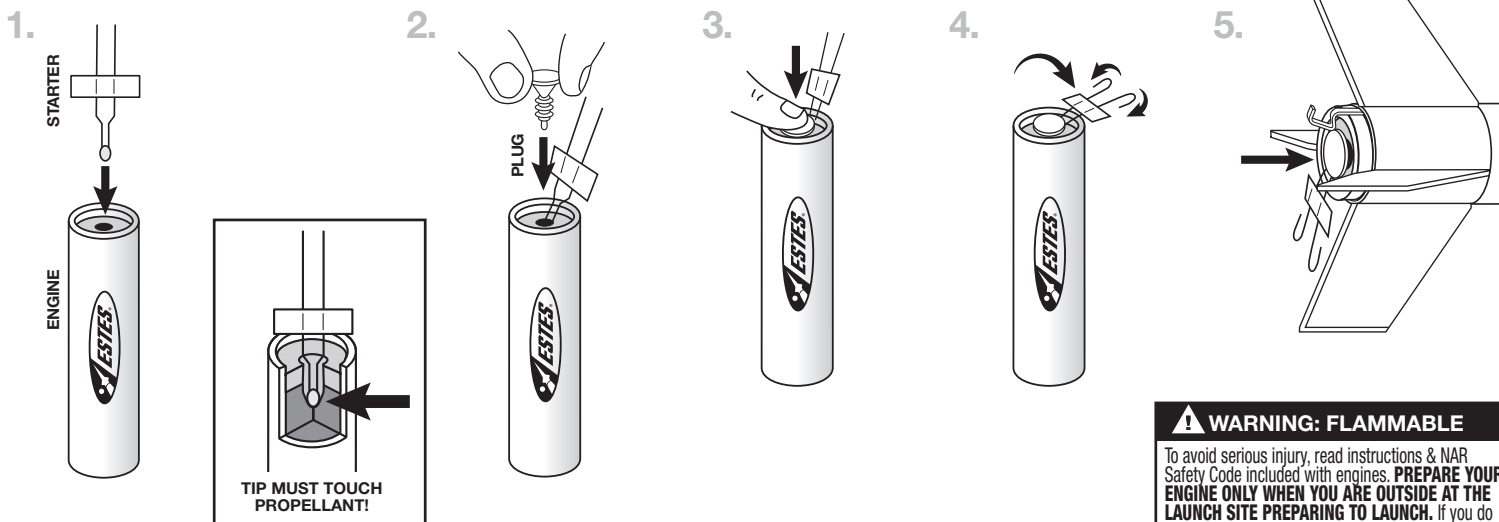
## PREPARE RECOVERY SYSTEM



## PREPARE FLIGHT RECOVERY



## PREPARE ENGINE

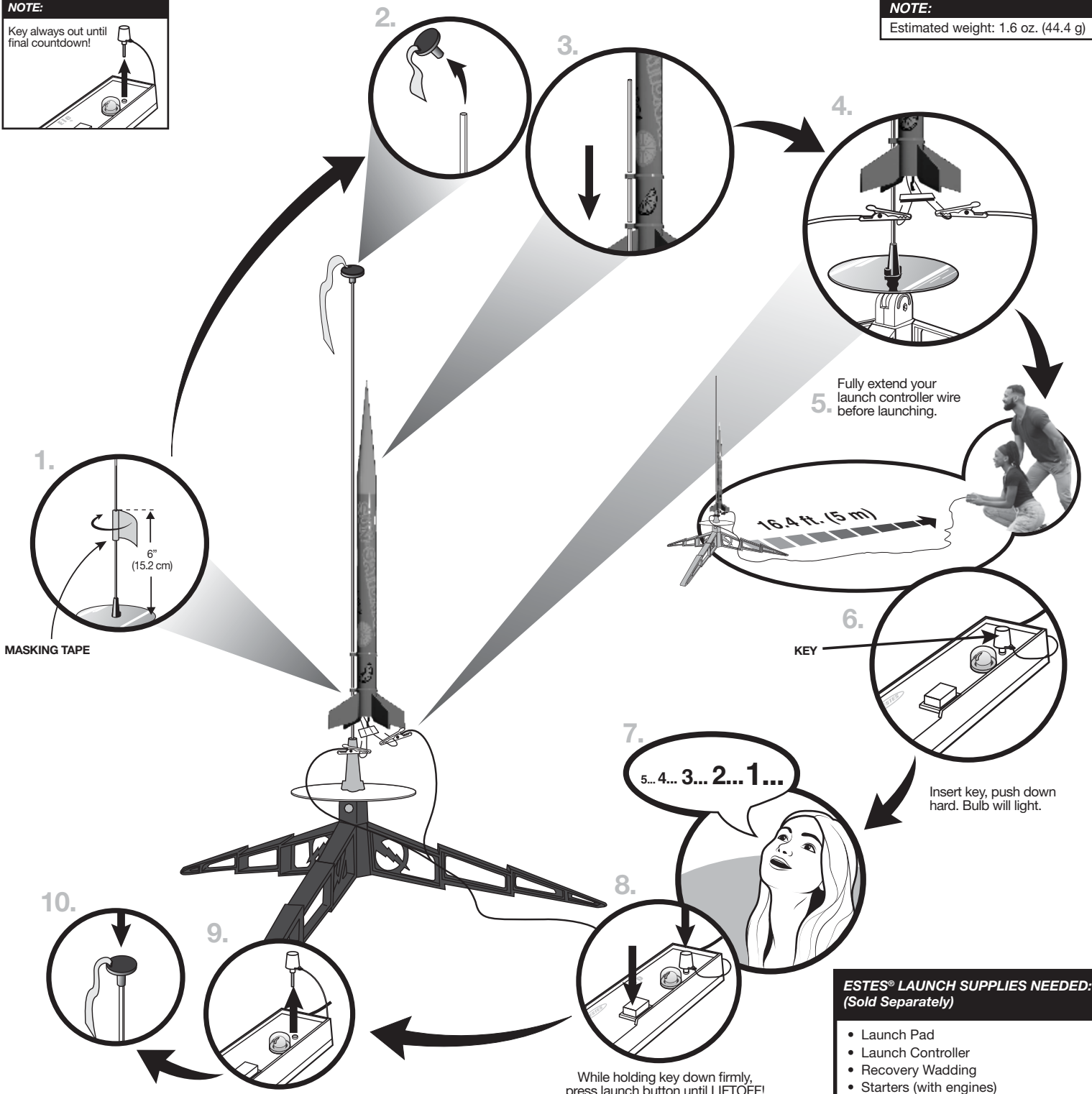


**⚠ WARNING: FLAMMABLE**  
To avoid serious injury, read instructions & NAR Safety Code included with engines. **PREPARE YOUR ENGINE ONLY WHEN YOU ARE OUTSIDE AT THE LAUNCH SITE PREPARING TO LAUNCH.** If you do not use your prepared engine, remove the starter before storing your engine.

**NOTE:**  
Key always out until final countdown!



**NOTE:**  
Estimated weight: 1.6 oz. (44.4 g)



**ESTES® LAUNCH SUPPLIES NEEDED:**  
(Sold Separately)

- Launch Pad
- Launch Controller
- Recovery Wadding
- Starters (with engines)
- Plugs (with engines)
- Estes® Engines: A8-3, B4-4, B6-4, C6-5, C6-7

**PRECAUTIONS**

**NAR SAFETY CODE**



**NO DRY GRASS OR WEEDS**

**PRE-LAUNCH CHECK** For safety, never launch a damaged rocket. Check the rocket's body, nose cone and fins. Also, check the engine mount, recovery system and launch lug(s). Repair any damage before launching the rocket.

**FLYING YOUR ROCKET** Choose a large field (500 ft. [152 m] square) free of dry weeds and brown grass. The larger the launch area, the better your chance of recovering your rocket. Launch only with little or no wind and good visibility. Always follow the National Association of Rocketry (NAR) SAFETY CODE (enclosed).

**MISFIRES TAKE THE KEY OUT OF THE CONTROLLER. WAIT ONE MINUTE BEFORE GOING NEAR THE ROCKET.** Disconnect the micro-clips and remove the engine. Take the plug and starter out of the engine. A burned starter means the starter tip was not touching engine propellant. Install a new starter; be sure the tip is touching propellant inside the engine. Push the plug in place. Repeat steps under Countdown and Launch.