



EstesRockets.com

MINI MAX™

2100/2445/5337

AGES
10+

Skill Level

INTERMEDIATE



MODEL ROCKET INSTRUCTIONS

KEEP FOR FUTURE REFERENCE

IMPORTANT: Please record date found on decal and keep for future reference. _____

Read all instructions. Make sure you have all parts and supplies.

SUPPLIES



PENCIL



FINE
SANDPAPER



RULER



YELLOW GLUE



HOBBY KNIFE



WHITE PRIMER



RED & BLACK
PAINT



CLEAR COAT
(OPTIONAL)



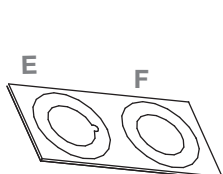
PLASTIC CEMENT



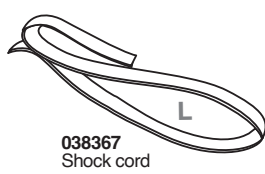
MASKING TAPE



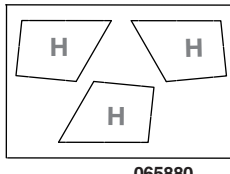
SCISSORS



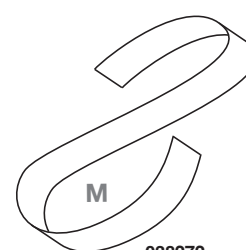
030118
Laser cut center
ring set



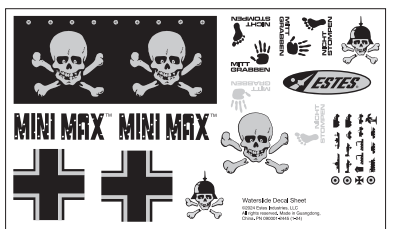
038367
Shock cord



065880
Laser cut fins



038272
Streamer



090001-2445
Waterslide
decal sheet

035023
Engine hook

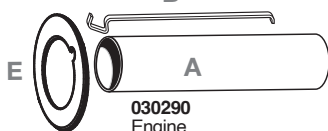
B

030222-4
Engine block

F

038175
Launch lug

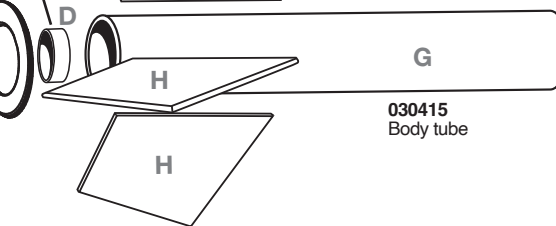
I



030290
Engine
mount tube



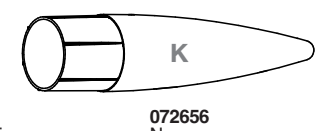
030167
Engine hook
retainer ring



030415
Body tube



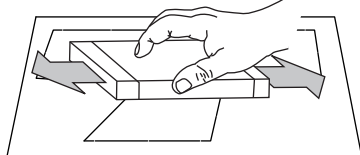
072654
Nose cone pin



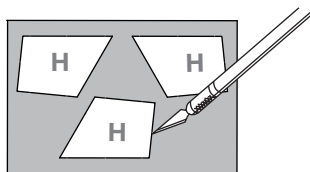
072656
Nose cone

PREPARE FINS

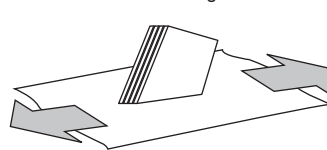
1. Sand both sides of laser cut fins.



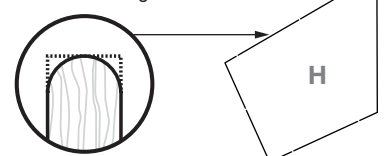
2. Using a hobby knife, cut out laser cut fins.



3. Stack fins together and sand all edges.

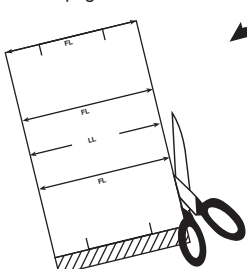


4. Round the leading edge of all fins.

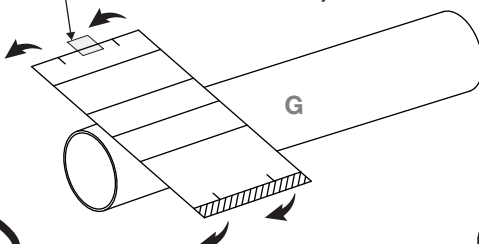


TUBE MARKING

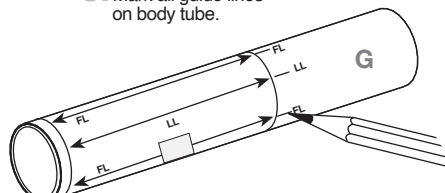
1. Cut out tube marking guide from page 2.



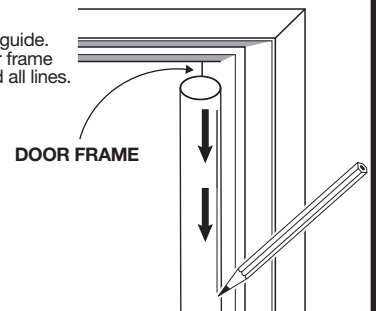
2. Wrap tube marking guide around end of body tube.



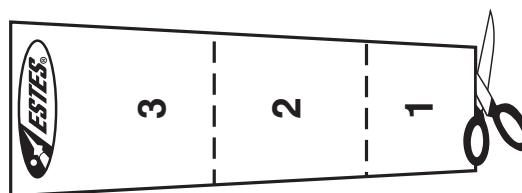
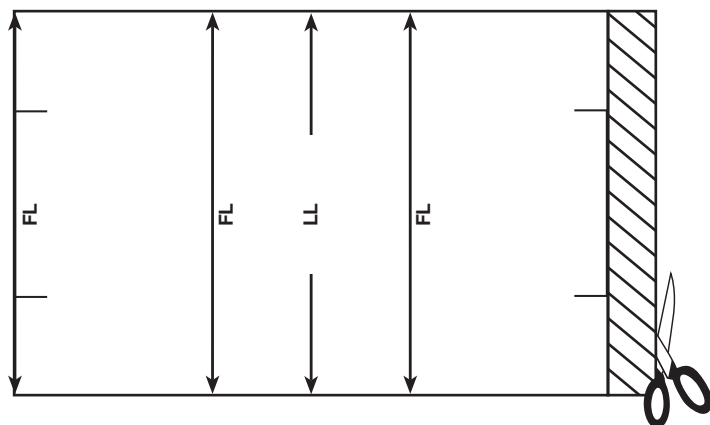
3. Mark all guide lines on body tube.



4. Remove guide. Use door frame to extend all lines.



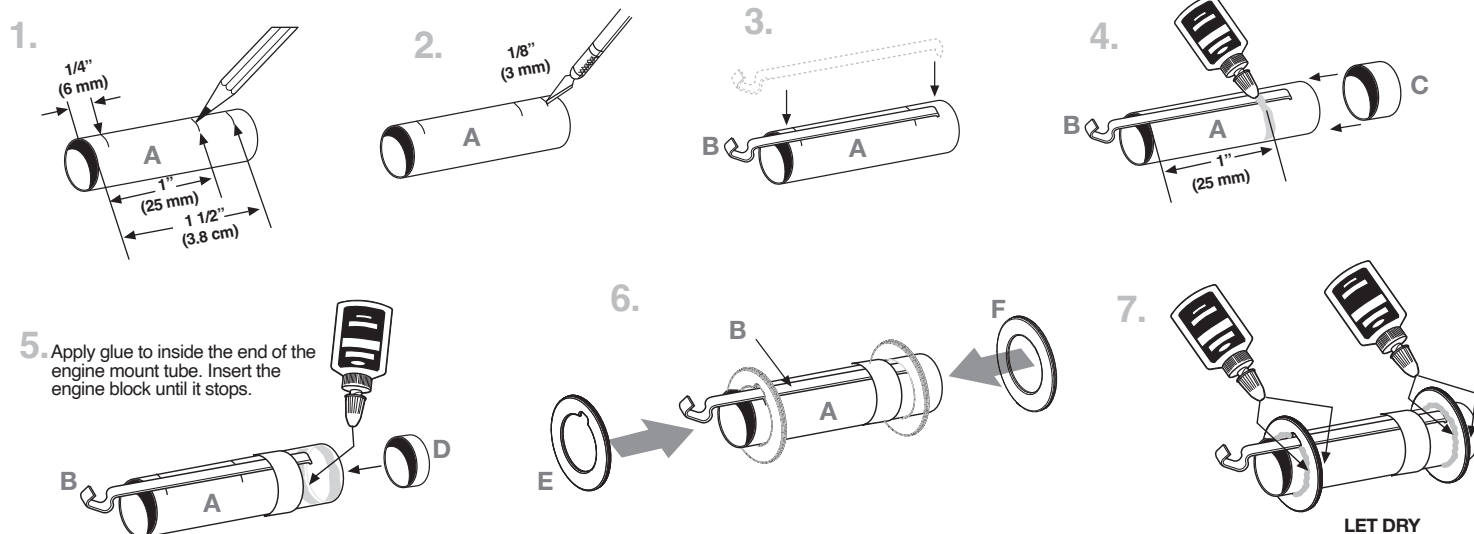
TUBE MARKING GUIDE AND SHOCK CORD MOUNT



NOTE:

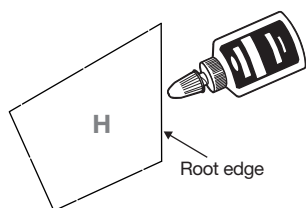
Make a copy if you want to keep instructions.

ASSEMBLE ENGINE MOUNT

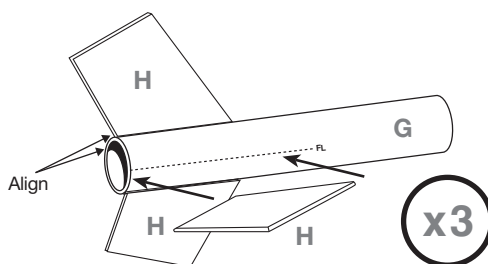


ATTACH FINS

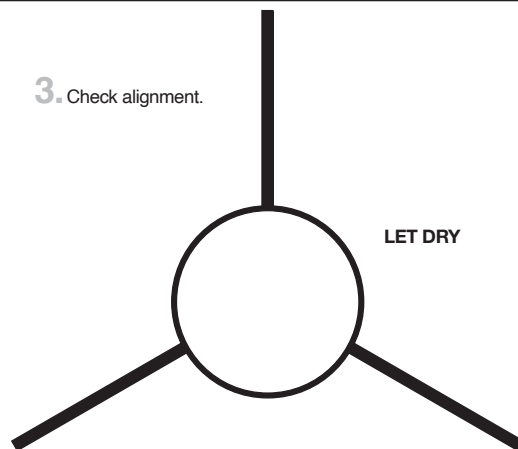
1. Apply thin layer of glue to root edge of fin. Let dry 1 minute and apply another thin layer.



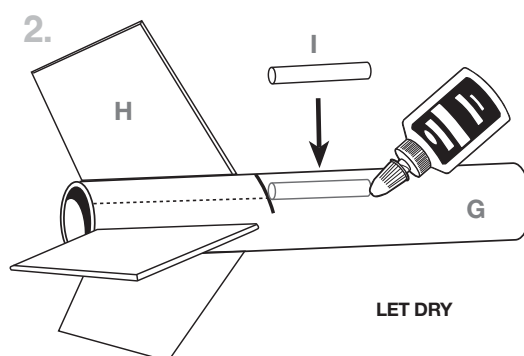
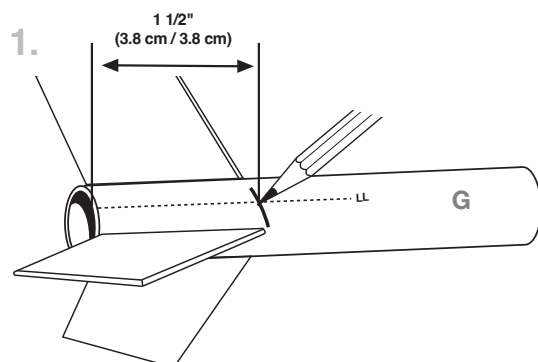
2. Carefully align fins to the fin lines marked on the body tube. Align the bottom of the root edge of the fin with the bottom of the body tube.



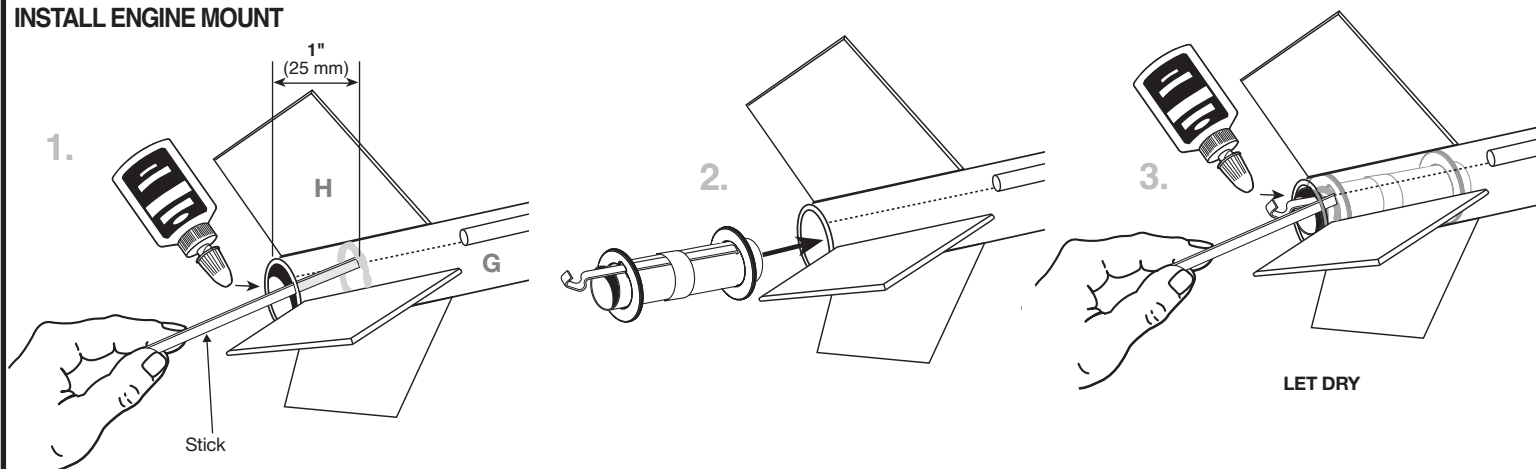
3. Check alignment.



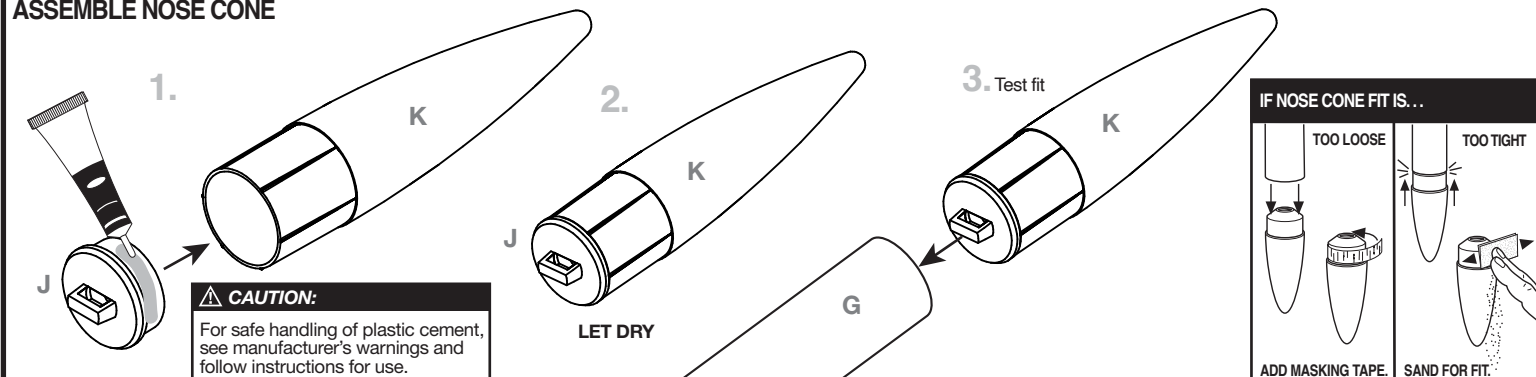
ATTACH LAUNCH LUG



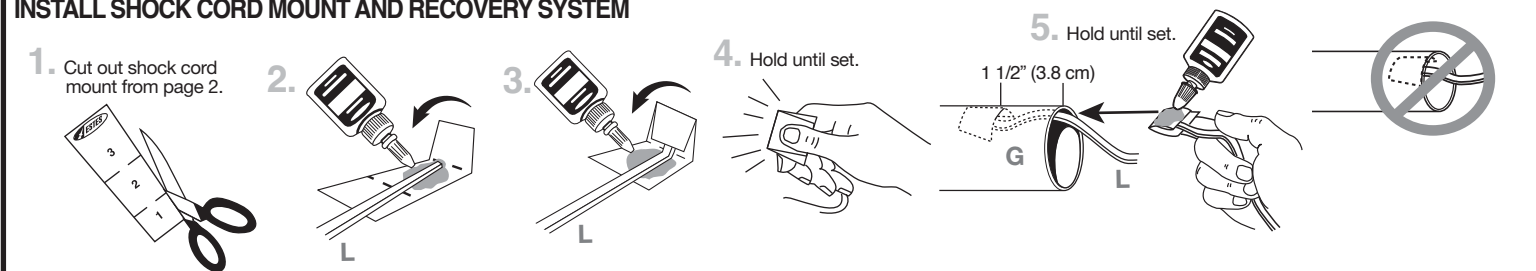
INSTALL ENGINE MOUNT



ASSEMBLE NOSE CONE



INSTALL SHOCK CORD MOUNT AND RECOVERY SYSTEM

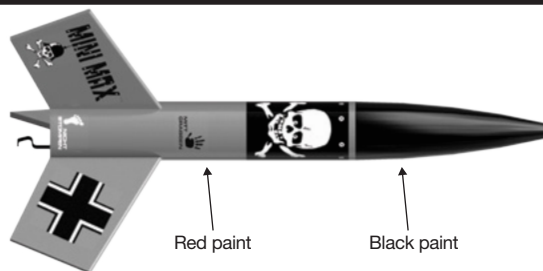


ROCKET FINISHING

Spray rocket with white primer, let dry & sand. Repeat until rocket is smooth, then paint. Apply decals after paint is dry.

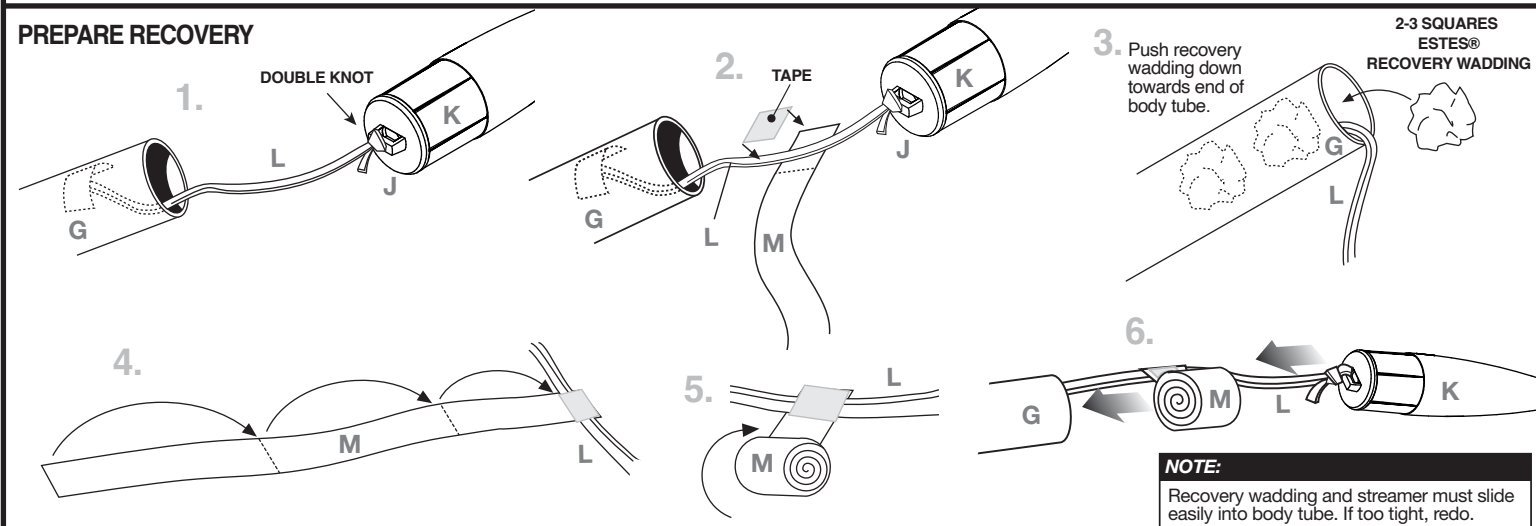
1. Cut decals from sheet, trimming close to edge.
2. One at a time, place in warm water until decal curls and begins to relax.
3. Remove and position on rocket, sliding decal away from backing material.
4. Blot with clean paper towel. Let set overnight.
5. Optional: apply protective clear coat.

Please refer to packaging image for suggested paint scheme and/or decal placement.



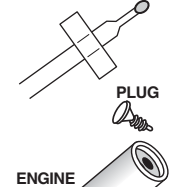
CAUTION:
See manufacturer's warnings and instructions before using spray finishing products.

PREPARE RECOVERY



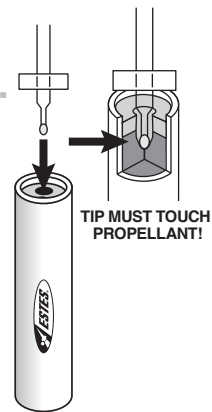
PREPARE ENGINE

1. STARTER

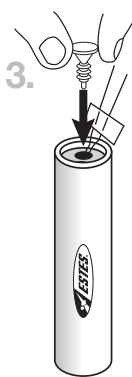


Use 1 each.

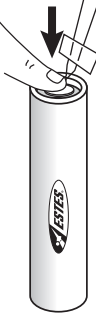
2.



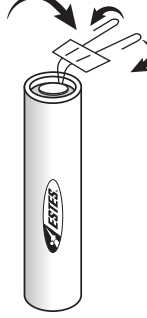
3.



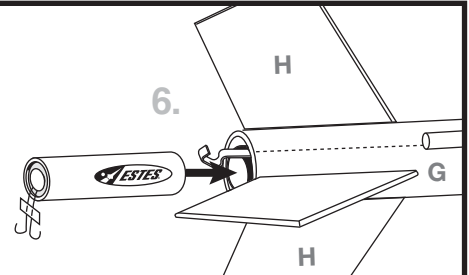
4.



5.



6.



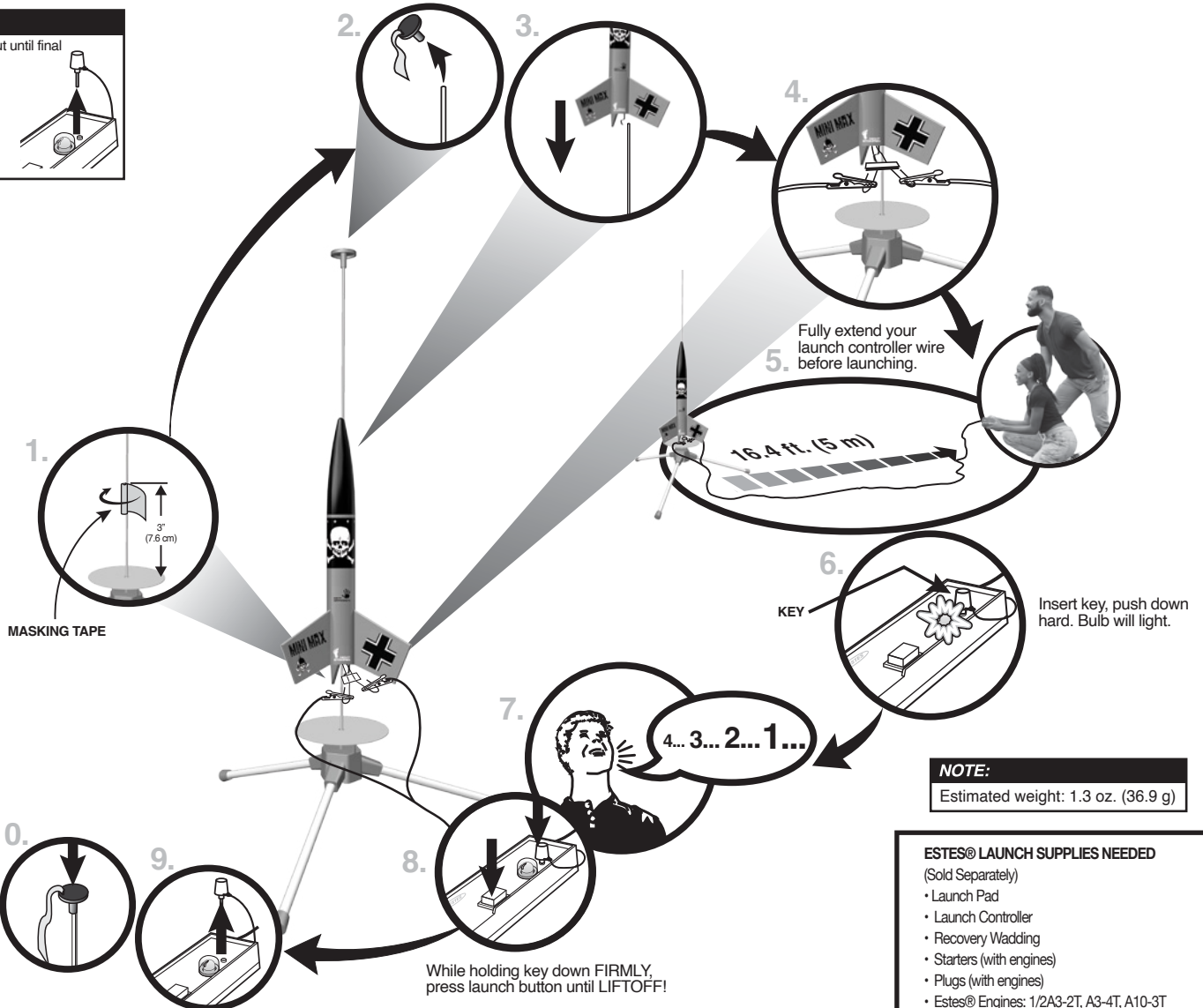
WARNING: FLAMMABLE

To avoid serious injury, read instructions & NAR Safety Code included with engines. **PREPARE YOUR ENGINE ONLY WHEN YOU ARE OUTSIDE AT THE LAUNCH SITE PREPARING TO LAUNCH.** If you do not use your prepared engine, remove the starter before storing your engine.

COUNTDOWN AND LAUNCH

NOTE:

Key always out until final countdown!



NOTE:

Estimated weight: 1.3 oz. (36.9 g)

ESTES® LAUNCH SUPPLIES NEEDED

(Sold Separately)

- Launch Pad
- Launch Controller
- Recovery Wadding
- Starters (with engines)
- Plugs (with engines)
- Estes® Engines: 1/2A3-2T, A3-4T, A10-3T

PRECAUTIONS



NAR SAFETY CODE



NO DRY GRASS OR WEEDS

PRE-LAUNCH CHECK For safety, never launch a damaged rocket. Check the rocket's body, nose cone and fins. Also, check the engine mount, recovery system and launch lug(s). Repair any damage before launching the rocket.

FLYING YOUR ROCKET Choose a large field (500 ft. [152 m] square) free of dry weeds and brown grass. The larger the launch area, the better your chance of recovering your rocket. Launch only with little or no wind and good visibility. Always follow the National Association of Rocketry (NAR) SAFETY CODE (enclosed).

MISFIRES TAKE THE KEY OUT OF THE CONTROLLER. WAIT ONE MINUTE BEFORE GOING NEAR THE ROCKET. Disconnect the micro-clips and remove the engine. Take the plug and starter out of the engine. A burned starter means the starter tip was not touching engine propellant. Install a new starter; be sure the tip is touching propellant inside the engine. Push the plug in place. Repeat steps under Countdown and Launch.