



estesrockets.com

NIKE SMOKE

7247

AGES
10+



Skill Level

INTERMEDIATE

MODEL ROCKET INSTRUCTIONS

KEEP FOR FUTURE REFERENCE

IMPORTANT: Please record date found on decal and keep for future reference. _____

READ ALL INSTRUCTIONS. Make sure you have all parts and supplies. Test fit all parts before applying glue. Refer to your glue manufacturer's dry times during build.

SUPPLIES



SCISSORS



PENCIL



RULER



FINE
SANDPAPER



CARPENTER'S
GLUE



HOBBY KNIFE



MASKING
TAPE



CLEAR TAPE



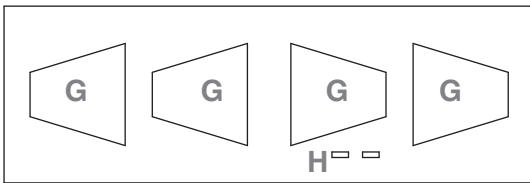
PRIMER



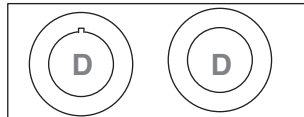
WHITE, YELLOW,
RED PAINTS



CLEAR COAT
(OPTIONAL)



032107
Laser cut wood sheet



030128
Laser cut centering rings

B 035021
Engine hook



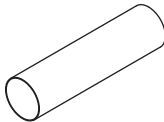
C 030168
Engine hook retainer ring



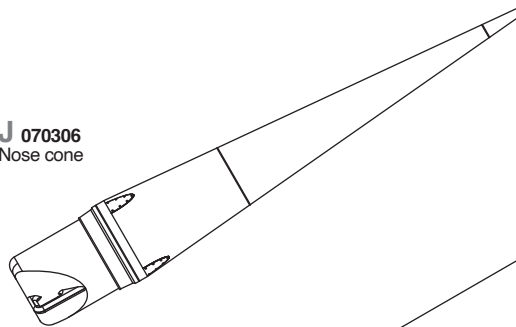
E 030224
Engine block



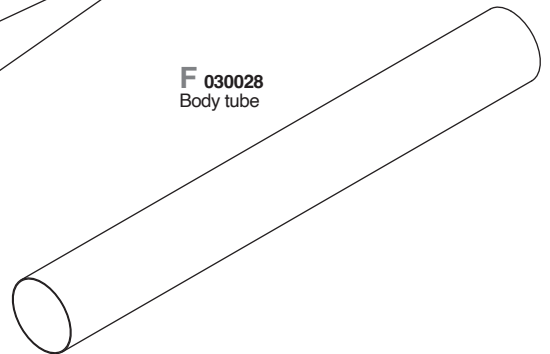
A 030408
Engine mount tube
3.98" (10.1 / 10,1 cm)



J 070306
Nose cone



F 030028
Body tube



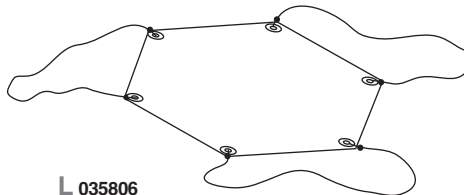
I 038176
Launch lugs



K 038389
Shock cord



L 035806
Parachute

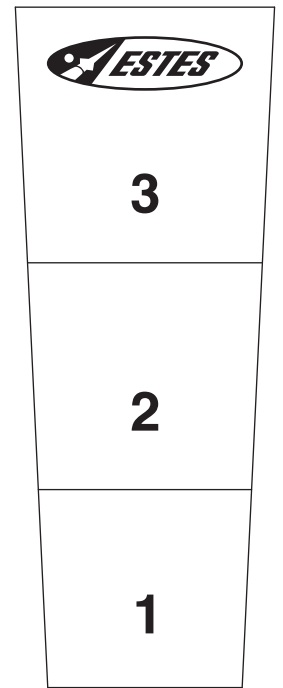
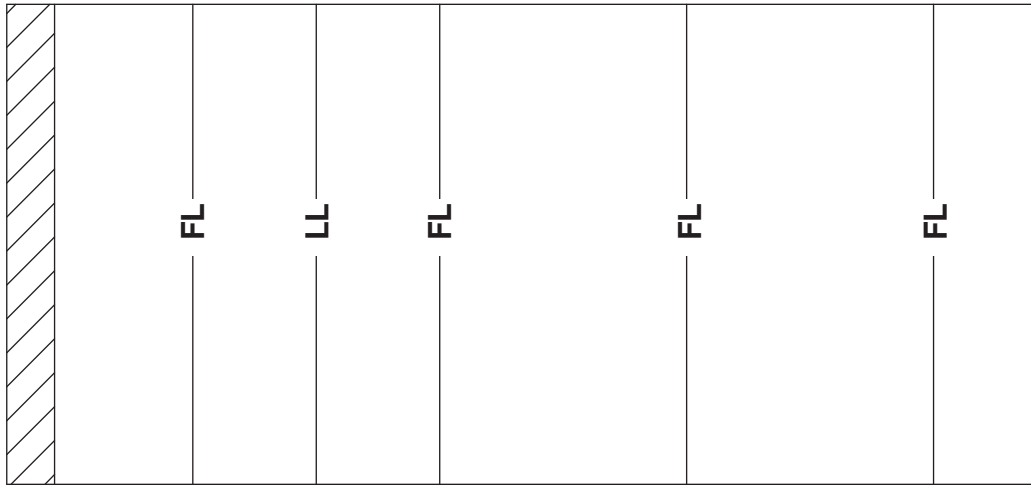


068108
Waterslide decal



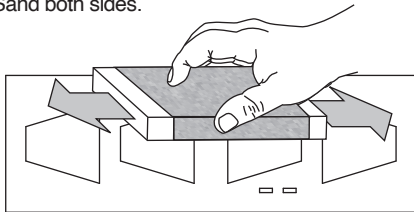
TUBE MARKING GUIDE & SHOCK CORD MOUNT

Make a copy if you want to keep instructions.

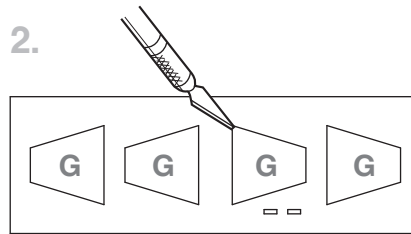


PREPARE SCALE FINS

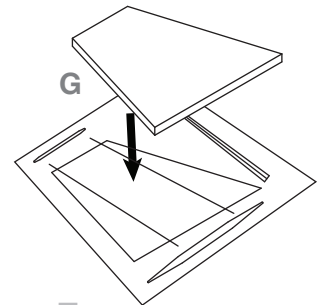
1. Sand both sides.



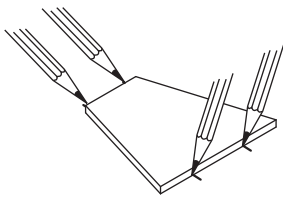
2.



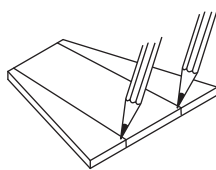
3. Place G over fin template.



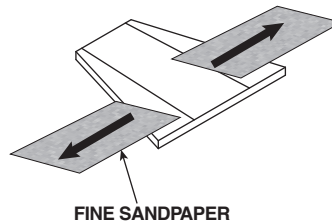
4. Mark lines on edges of G.



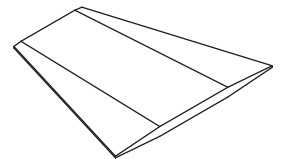
5. Extend lines.



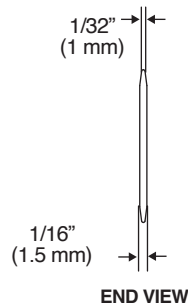
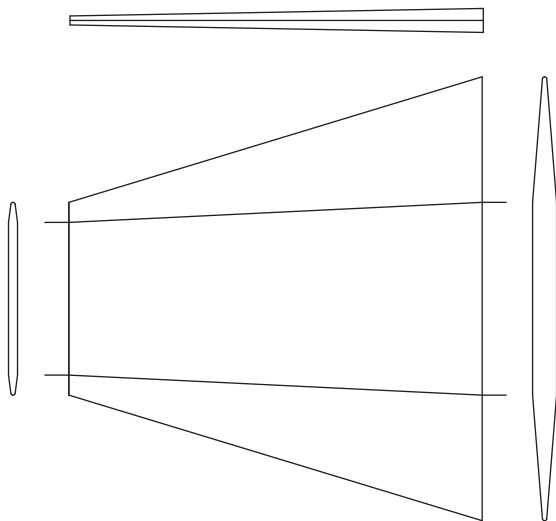
6. Sand angles as shown. Refer to template for correct shape.



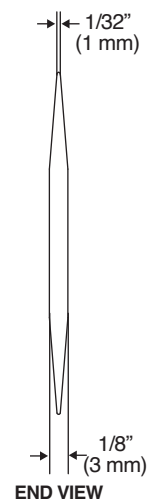
7.



FINE SANDPAPER



END VIEW



END VIEW

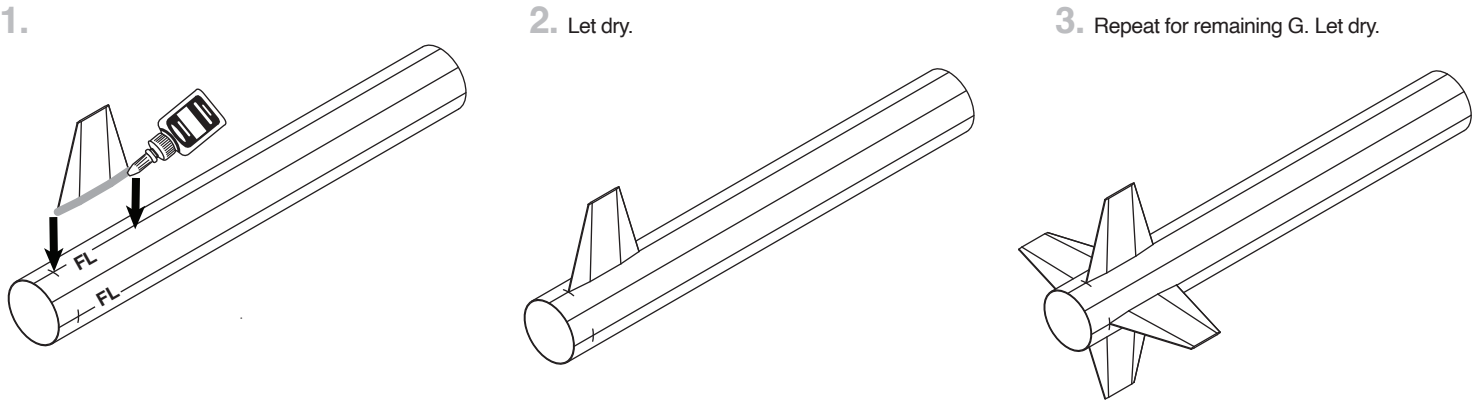
ASSEMBLE ENGINE MOUNT

- -
 -
 -
 -
-

MARK TUBE

-
-
-
4. Remove guide. Use a door frame to extend all lines.
5. Mark FL lines.

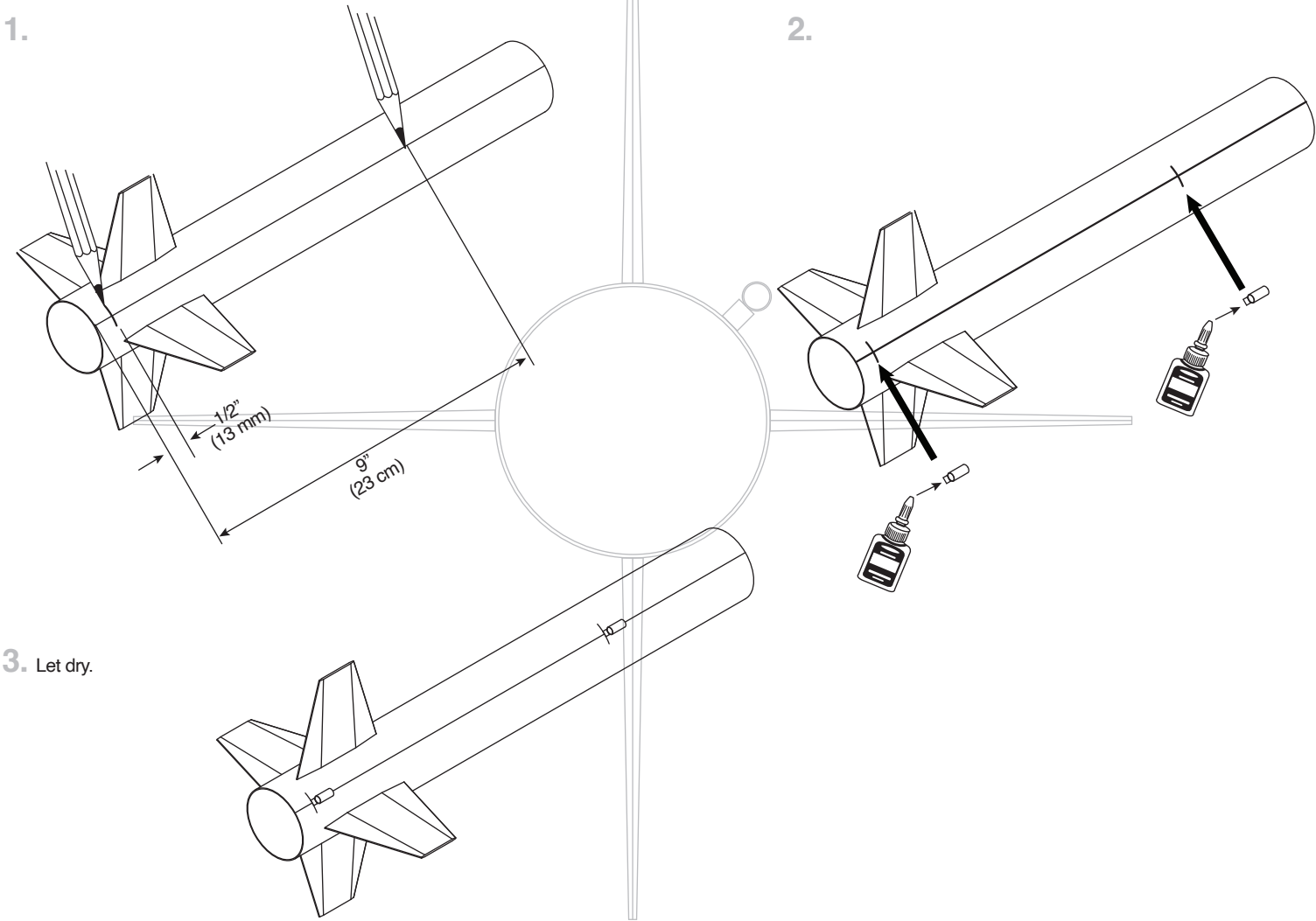
ATTACH FINS



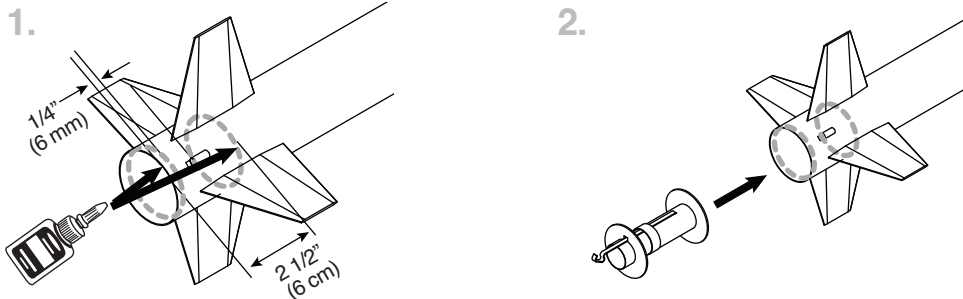
ASSEMBLE LAUNCH LUGS



ATTACH LAUNCH LUG

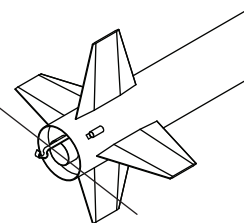


INSTALL ENGINE MOUNT



3. Let dry.

ENDS EVEN



ROCKET FINISHING

1. Spray rocket with white primer, let dry, and sand. Repeat until rocket is smooth, then paint. Apply decals after paint is dry.
2. Cut decals from sheet, trimming close to edge.
3. One at a time, place in warm water until decal curls and begins to relax.
4. Remove and position on rocket, sliding decal away from backing material.
5. Blot with clean paper towel. Let set overnight.
6. OPTIONAL: Apply protective clear coat.

NOTE:

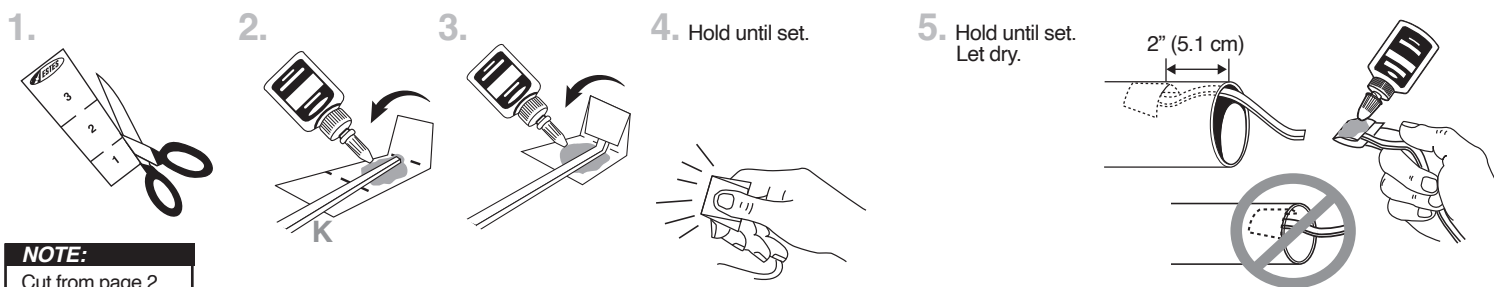
Please refer to packaging for suggested paint scheme and/or decal placement.



CAUTION:

See manufacturer's warnings and instructions before using spray finishing products.

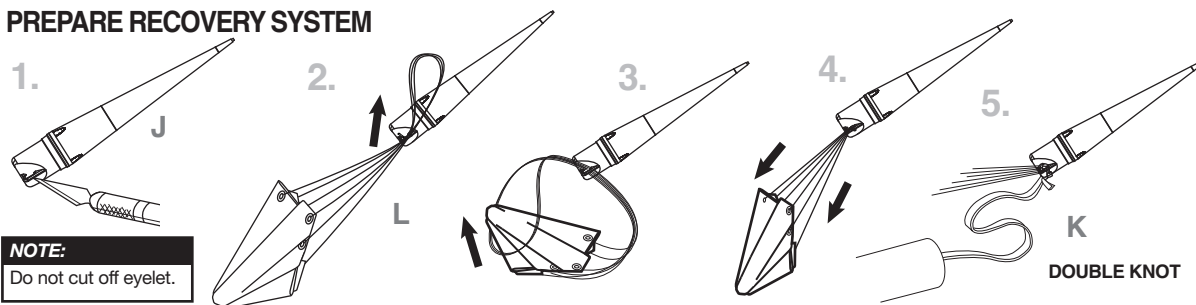
INSTALL SHOCK CORD



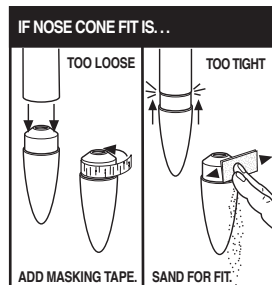
NOTE:

Cut from page 2.

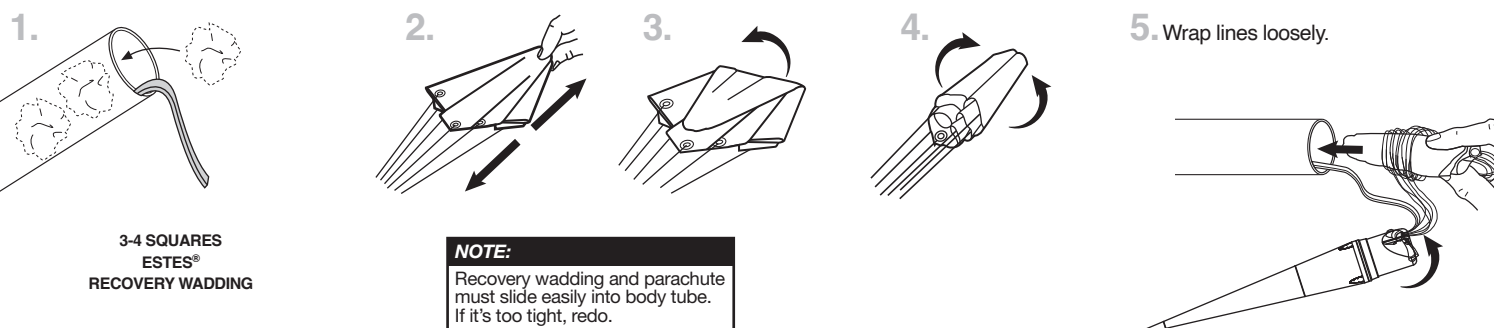
PREPARE RECOVERY SYSTEM



NOTE:
Do not cut off eyelet.



PREPARE FLIGHT RECOVERY



3-4 SQUARES
ESTES®
RECOVERY WADDING

NOTE:

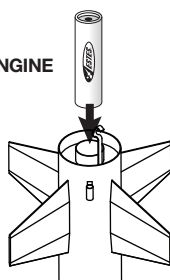
Recovery wadding and parachute must slide easily into body tube. If it's too tight, redo.

PREPARE ENGINE

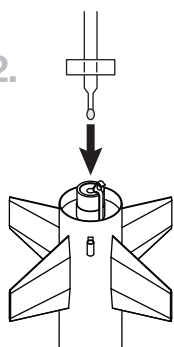
1. Use one each.



ENGINE

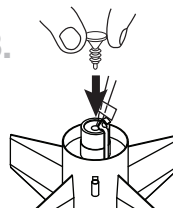


2.

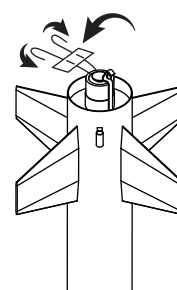


TIP MUST TOUCH
PROPELLANT!

3.



4.



⚠ WARNING: FLAMMABLE

To avoid serious injury, read instructions & NAR Safety Code included with engines. **PREPARE YOUR ENGINE ONLY WHEN YOU ARE OUTSIDE AT THE LAUNCH SITE PREPARING TO LAUNCH.** If you do not use your prepared engine, remove the starter before storing your engine.

NOTE:

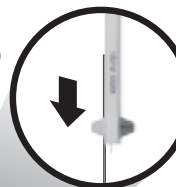
Always keep the key **OUT** until final countdown.



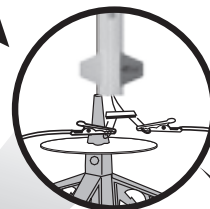
2.



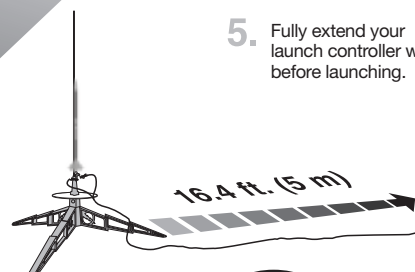
3.



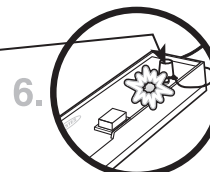
4.



5. Fully extend your launch controller wire before launching.



KEY



Insert key, push down hard. Bulb will light.

6.

NOTE:

Estimated weight: 2.4 oz. (68 g)

ESTES® LAUNCH SUPPLIES NEEDED (Sold Separately)

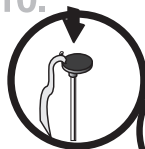
- Porta-Pad® II Launch Pad
- Electron Beam® Launch Controller
- Recovery Wadding
- Starters (with engines)
- Plugs (with engines)
- Estes® Engines: B6-4 (first flight), C6-5

While holding key down **FIRMLY**, press launch button until **LIFTOFF!**

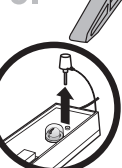
7.



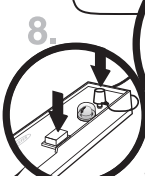
10.



9.

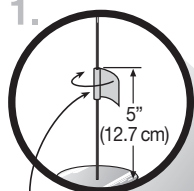


8.



MASKING TAPE

1.



PRECAUTIONS



NAR SAFETY CODE



NO DRY GRASS OR WEEDS

PRE-LAUNCH CHECK For safety, never launch a damaged rocket. Check the rocket's body, nose cone and fins. Also, check the engine mount, recovery system and launch lug(s). Repair any damage before launching the rocket.

FLYING YOUR ROCKET Choose a large field (500 ft. [152 m] square) free of dry weeds and brown grass. The larger the launch area, the better your chance of recovering your rocket. Launch only with little or no wind and good visibility. Always follow the National Association of Rocketry (NAR) SAFETY CODE (enclosed).

MISFIRES TAKE THE KEY OUT OF THE CONTROLLER. WAIT ONE MINUTE BEFORE GOING NEAR THE ROCKET. Disconnect the micro-clips and remove the engine. Take the plug and starter out of the engine. A burned starter means the starter tip was not touching engine propellant. Install a new starter; be sure the tip is touching propellant inside the engine. Push the plug in place. Repeat steps under Countdown and Launch.

