



EstesRockets.com

LASER X2™

7320

AGES
10+



Skill Level

ADVANCED

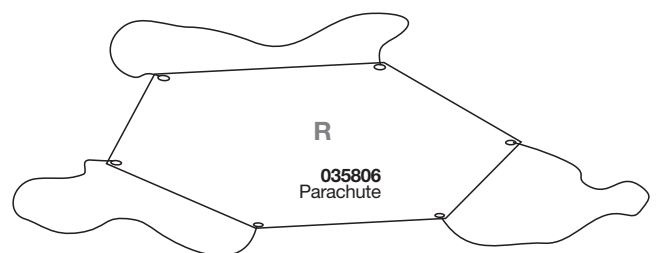
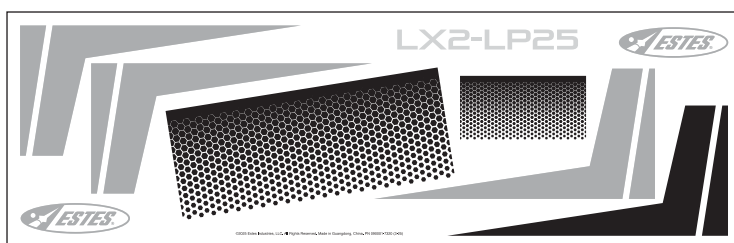
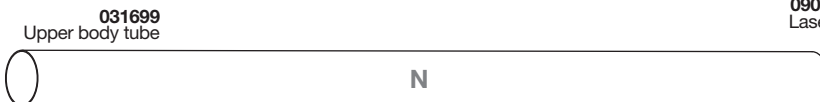
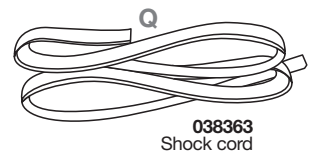
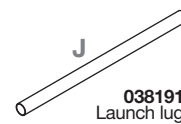
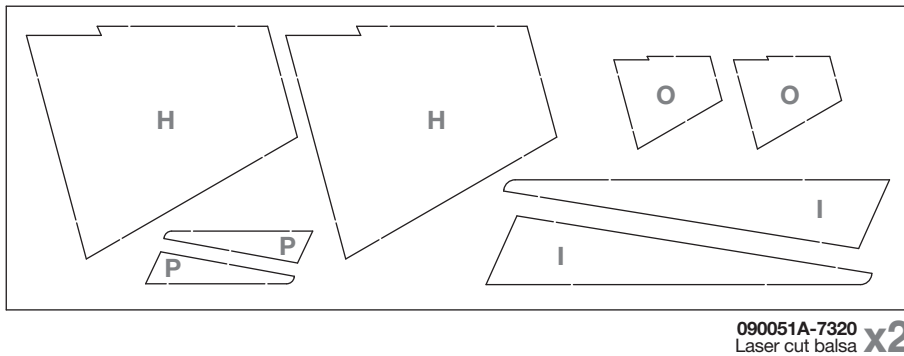
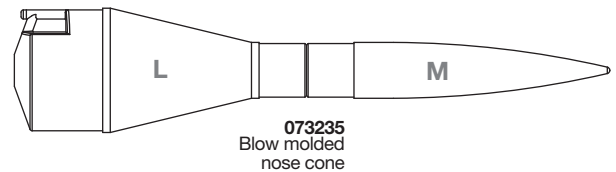
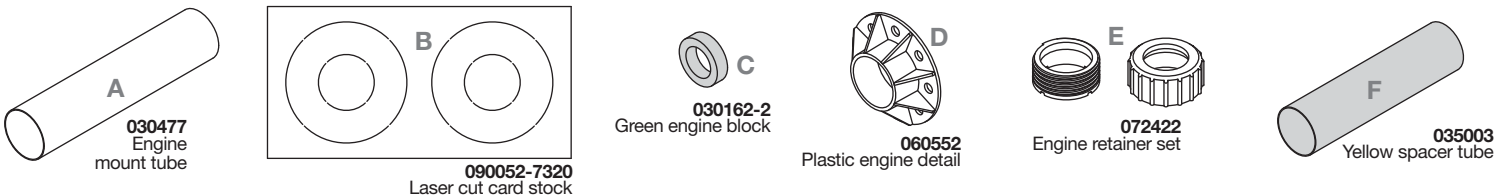
MODEL ROCKET INSTRUCTIONS

KEEP FOR FUTURE REFERENCE

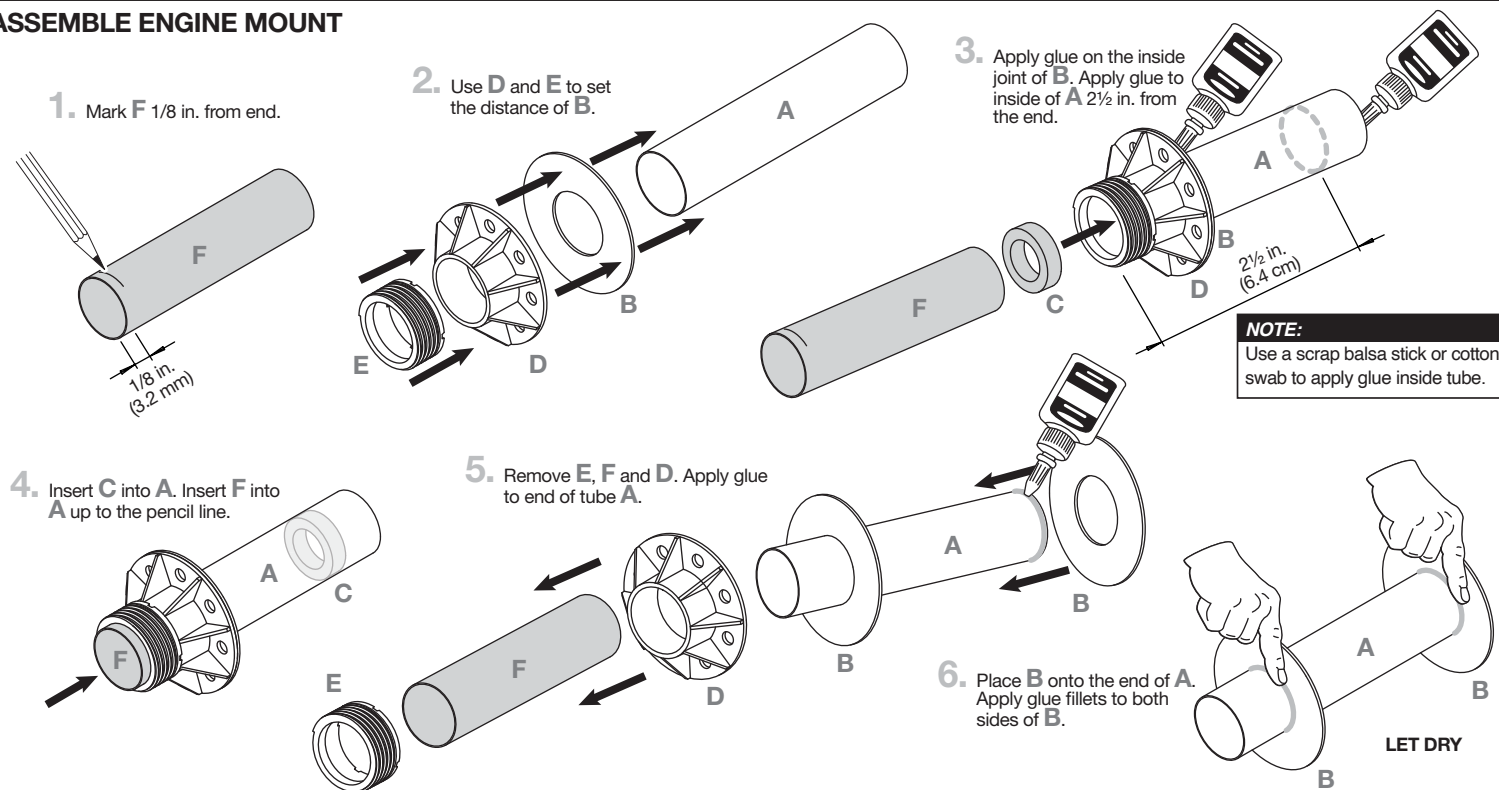
IMPORTANT: Please record date found on decal and keep for future reference. _____

READ ALL INSTRUCTIONS. Make sure you have all parts and supplies. Test fit all parts before applying glue. Refer to your glue manufacturer's dry times during build.

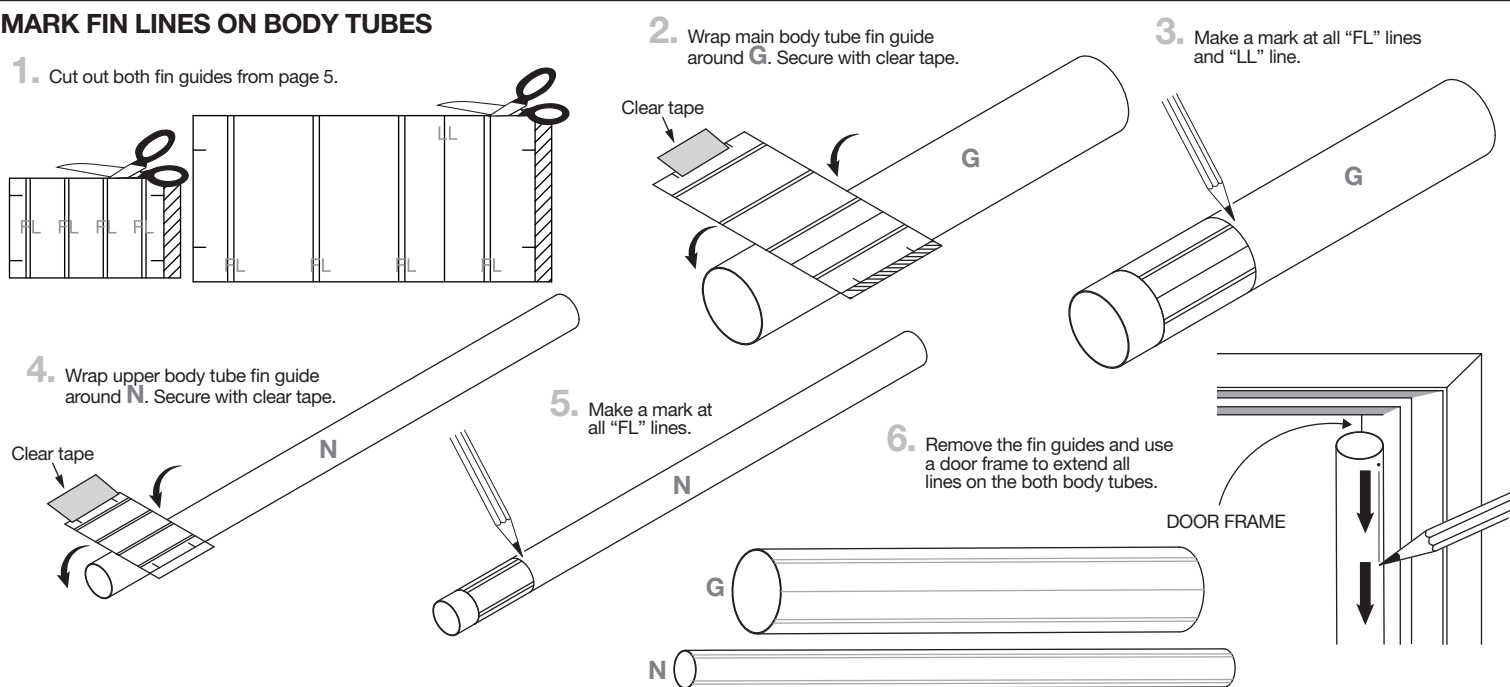
SUPPLIES



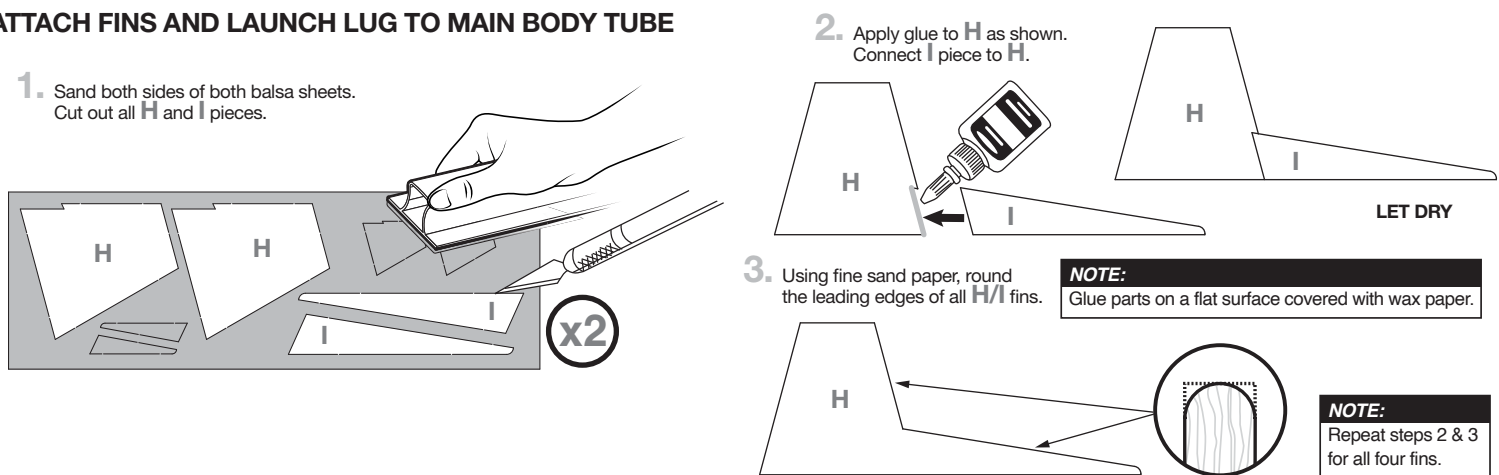
ASSEMBLE ENGINE MOUNT



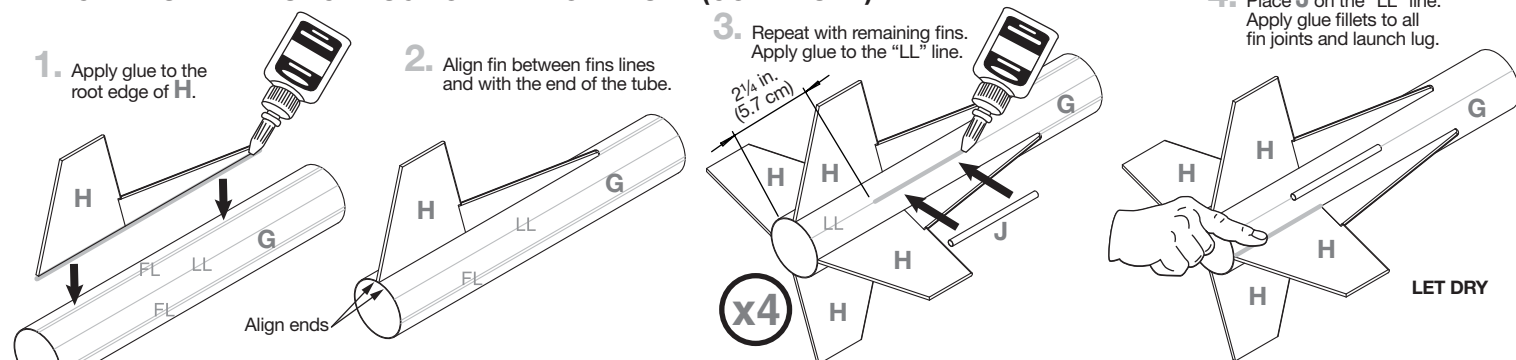
MARK FIN LINES ON BODY TUBES



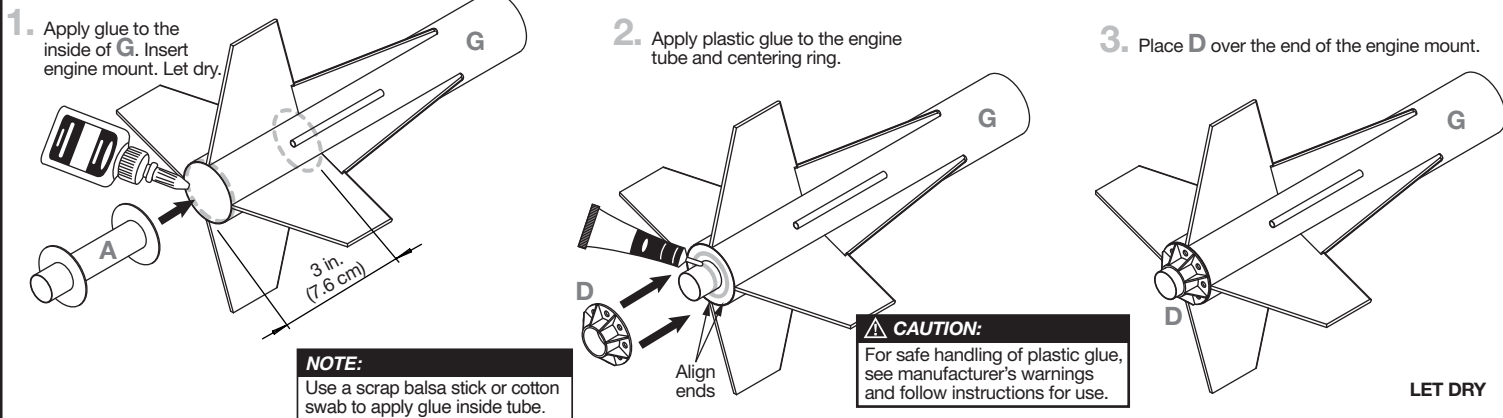
ATTACH FINS AND LAUNCH LUG TO MAIN BODY TUBE



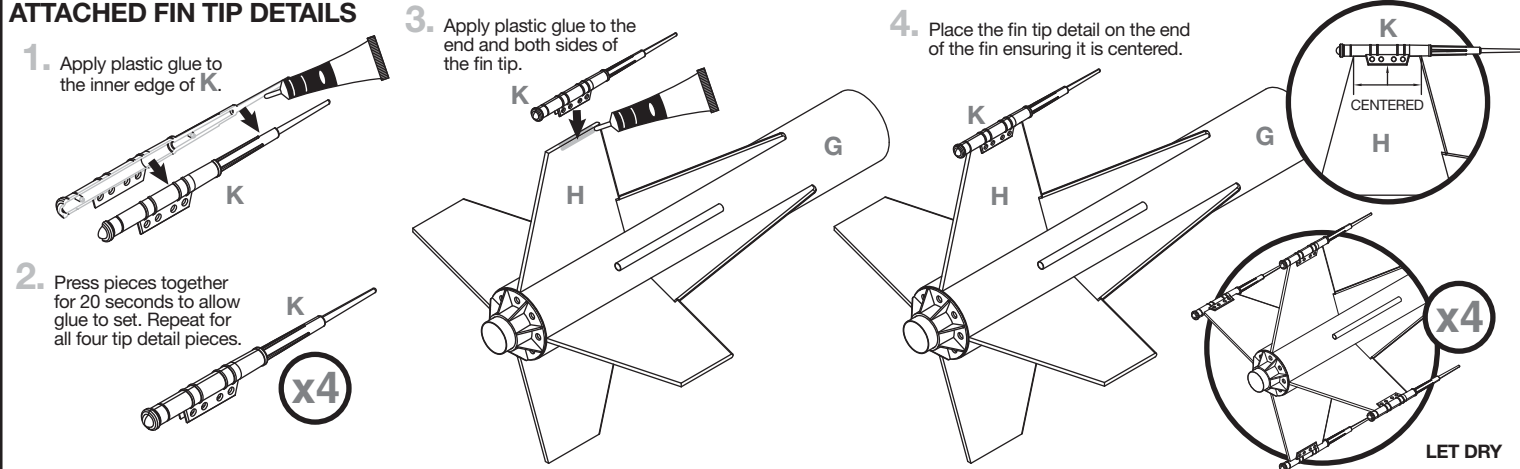
ATTACH FINS AND LAUNCH LUG TO MAIN BODY TUBE (CONTINUED)



INSTALL ENGINE MOUNT



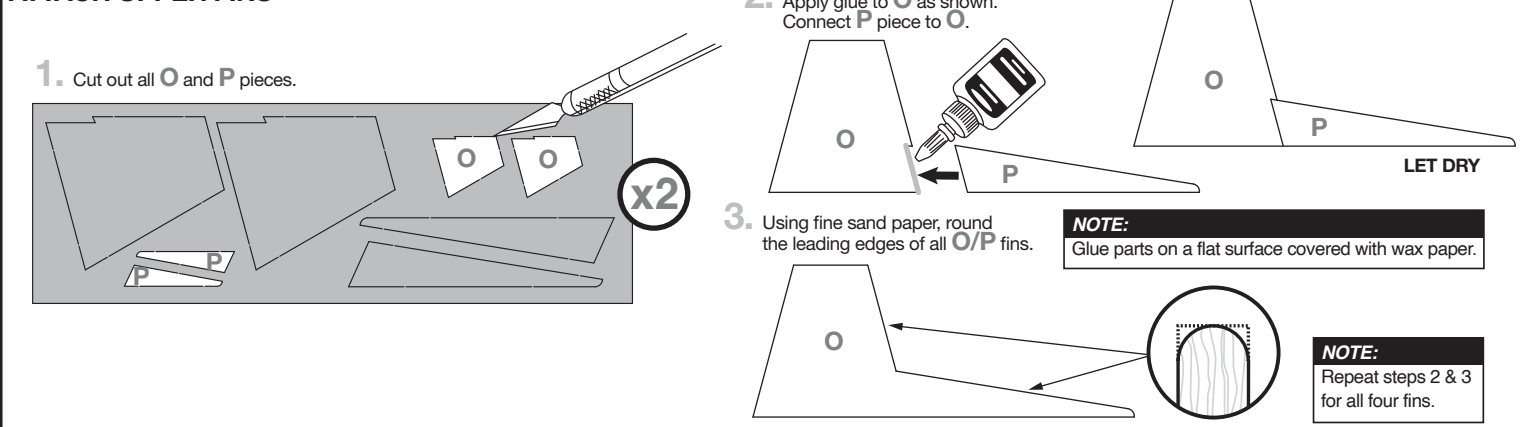
ATTACHED FIN TIP DETAILS



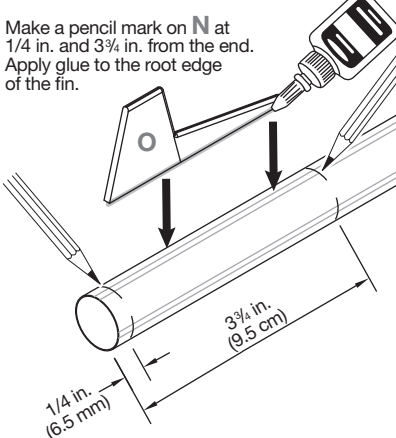
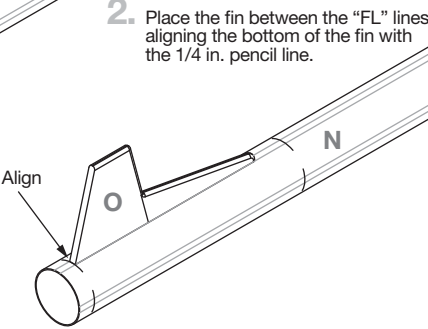
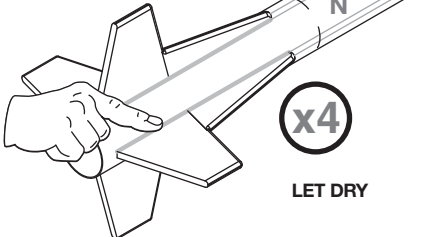
PREPARE BLOW MOLDED PART



ATTACH UPPER FINS


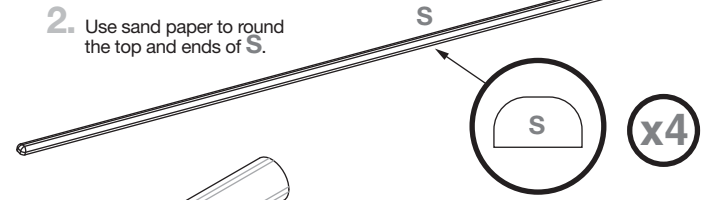
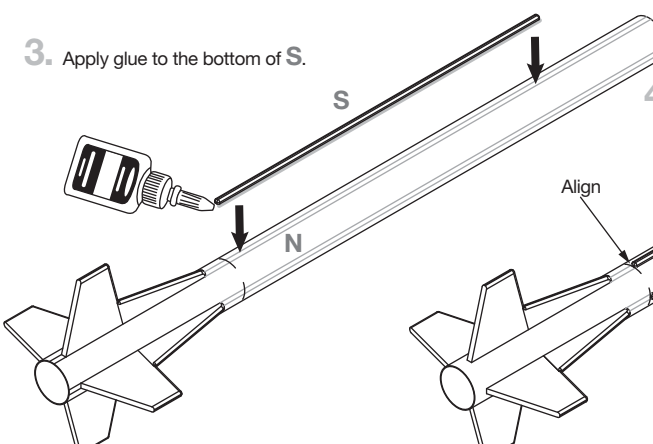
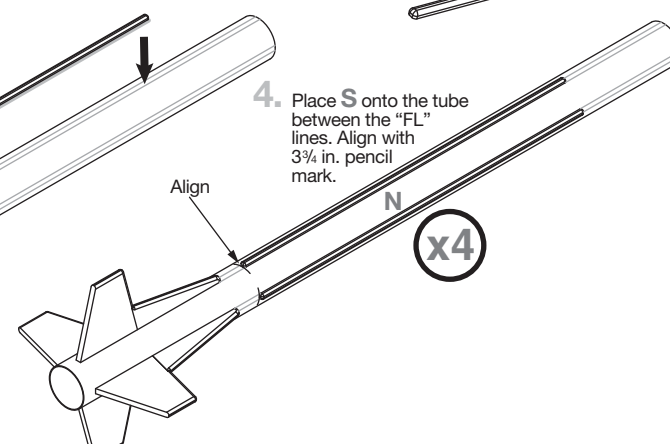
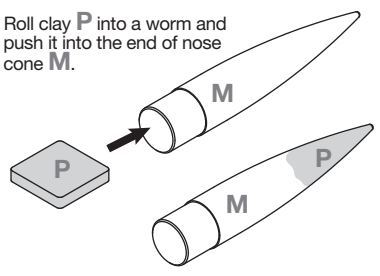
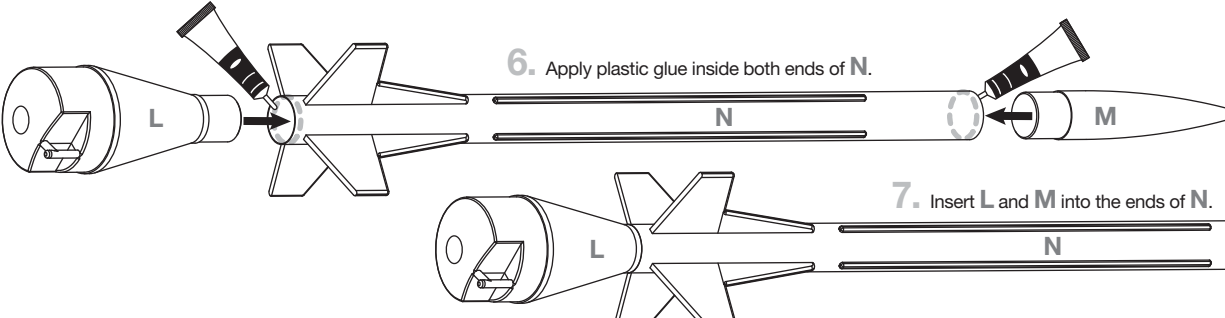
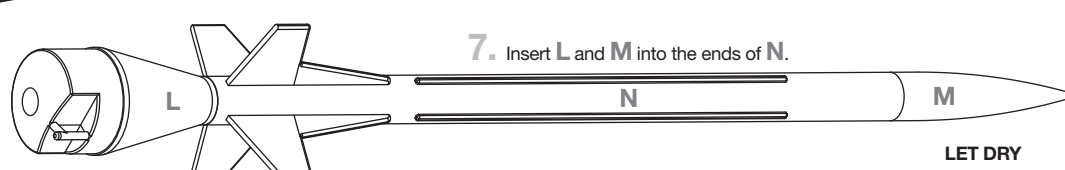


ATTACH UPPER FINS (CONTINUED)

1. Make a pencil mark on **N** at 1/4 in. and 3 3/4 in. from the end. Apply glue to the root edge of the fin.

2. Place the fin between the "FL" lines aligning the bottom of the fin with the 1/4 in. pencil line.

3. Repeat for remaining fins. Apply glue fillets to all fin joints.


LET DRY

ASSEMBLE FRONT STRAKES AND NOSE CONE

1. Cut out all **S**.

2. Use sand paper to round the top and ends of **S**.

3. Apply glue to the bottom of **S**.

4. Place **S** onto the tube between the "FL" lines. Align with 3 3/4 in. pencil mark.

5. Roll clay **P** into a worm and push it into the end of nose cone **M**.

6. Apply plastic glue inside both ends of **N**.

7. Insert **L** and **M** into the ends of **N**.


LET DRY

PAINT AND DECALS

PAINT COLORS

Black Paint
Orange Paint
White Paint

1. Spray rocket with white primer, let dry, and sand. Repeat until rocket is smooth.
2. Paint entire rocket white.
3. Mask off rocket as needed for orange and black paint application.
4. Apply decals only after paint is dry.
5. Cut decals from sheet, trimming close to edge.
6. One at a time, place in warm water until decal curls and begins to relax.
7. Remove and position on rocket, sliding decal away from backing material.
8. Blot with clean paper towel. Let set overnight.
9. OPTIONAL: Apply protective clear coat.

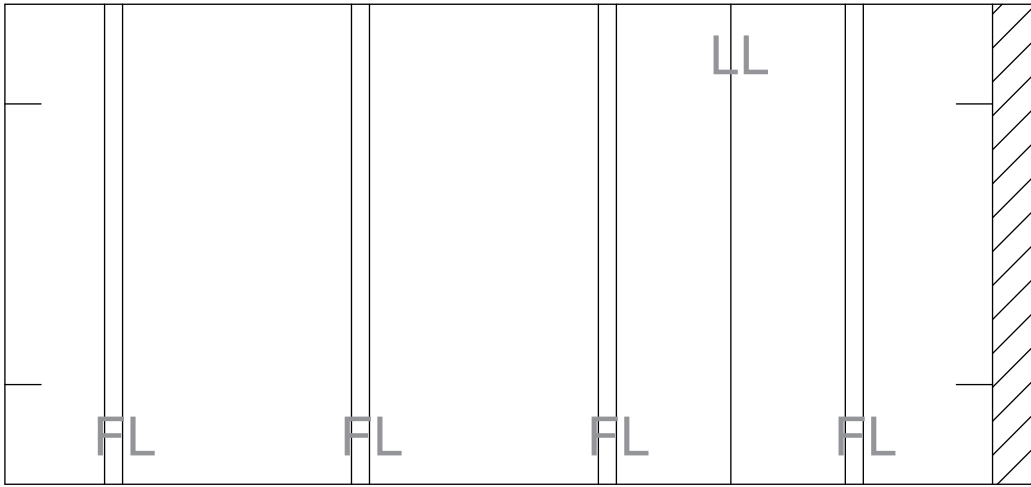
180° VIEWS
ON PAGE 5 →

CAUTION:

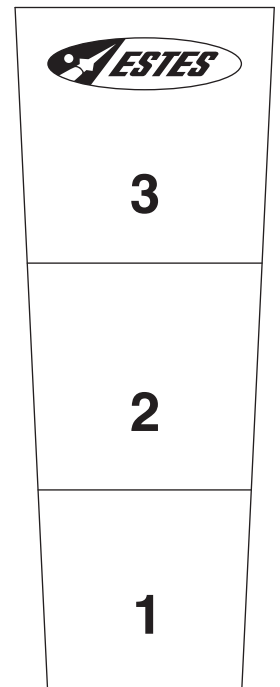
For safe handling of spray paints, see manufacturer's warnings and follow instructions for use.

NOTE:

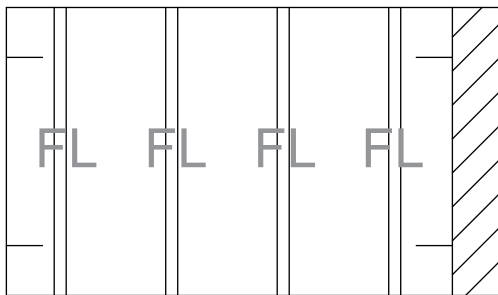
Please refer to packaging for suggested paint scheme and/or decal placement.



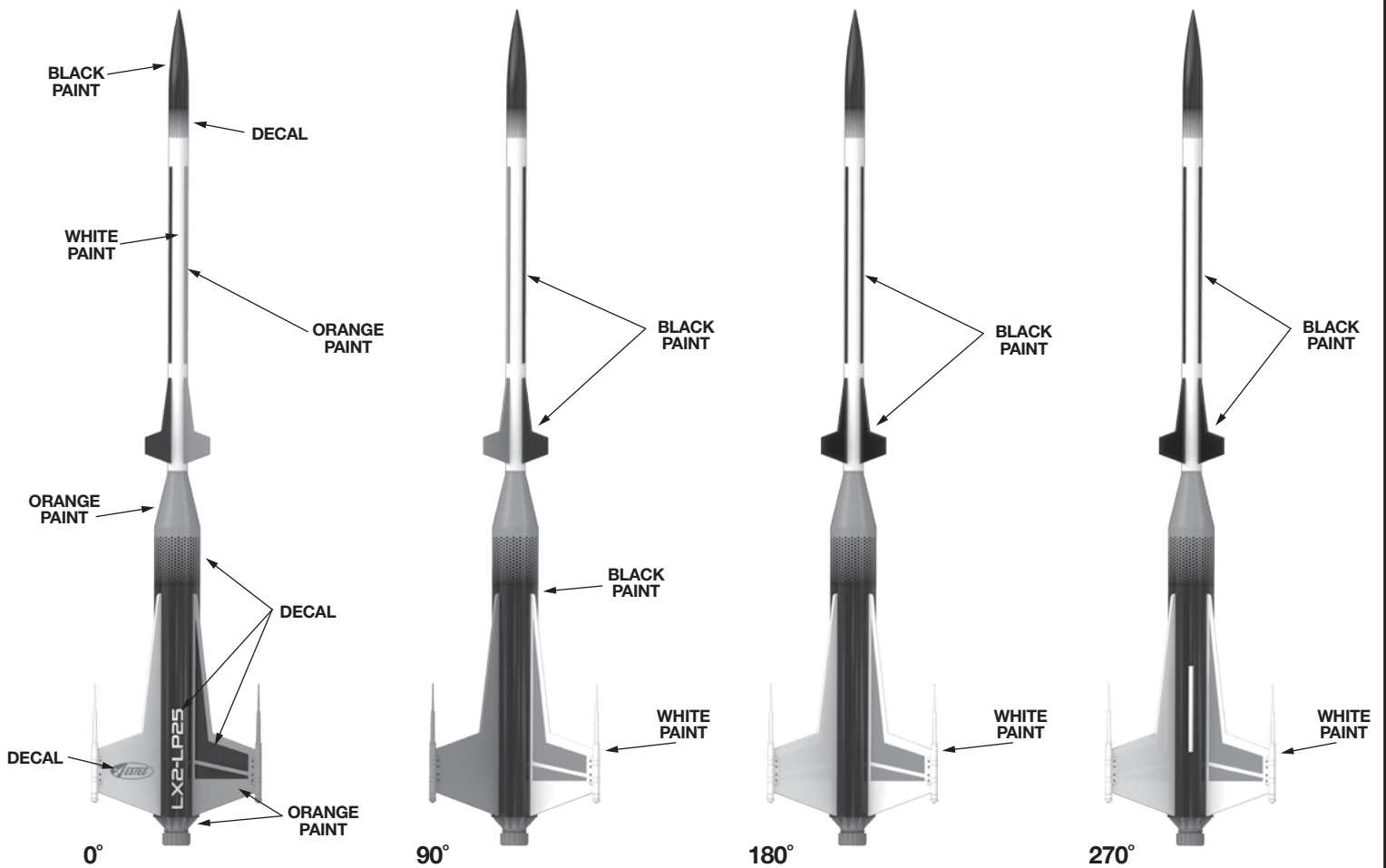
MAIN BODY TUBE FIN GUIDE



SHOCK CORD MOUNT



UPPER BODY TUBE FIN GUIDE



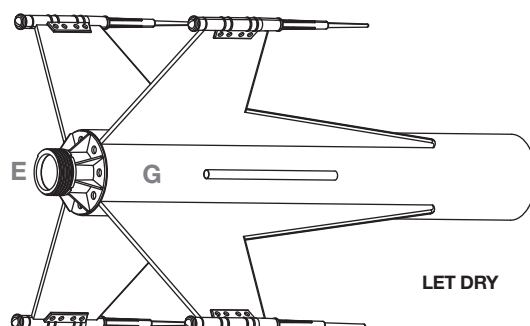
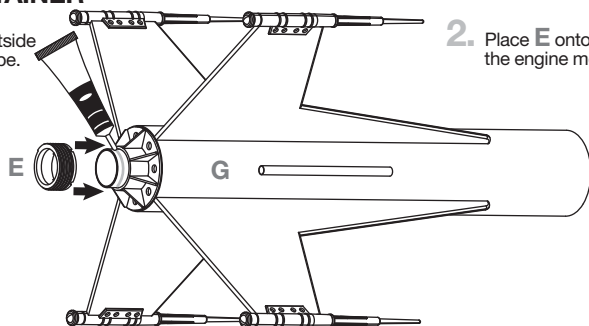
**THIS PAGE
INTENTIONALLY
LEFT BLANK**

INSTALL ENGINE RETAINER

1. Apply plastic glue to the outside end of the engine mount tube.
2. Place E onto the end of the engine mount tube.

NOTE:

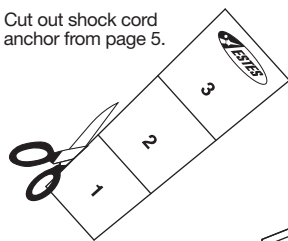
Sand off any paint on engine tube before applying glue.



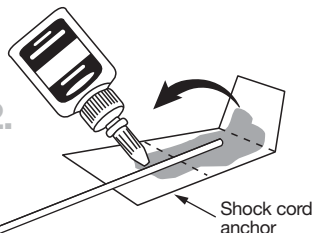
LET DRY

ASSEMBLE RECOVERY SYSTEM

1. Cut out shock cord anchor from page 5.

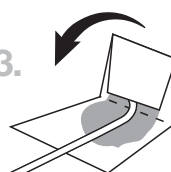


2.

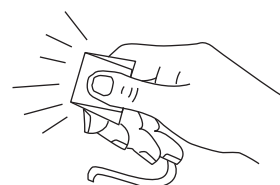


Shock cord anchor

3.

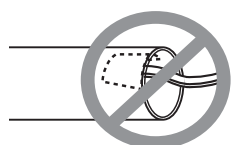
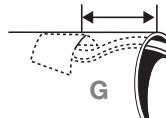


4. Hold until set.



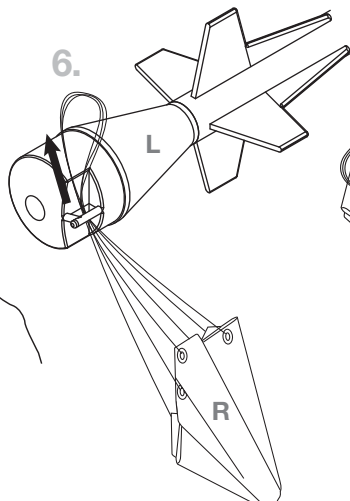
5. Apply glue to shock cord anchor and insert into G 2 in. from the end. Hold until set.

2 in. (5 cm)

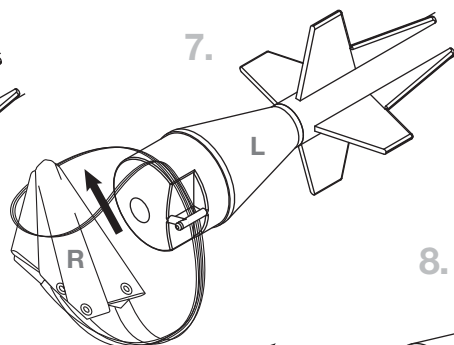


LET DRY

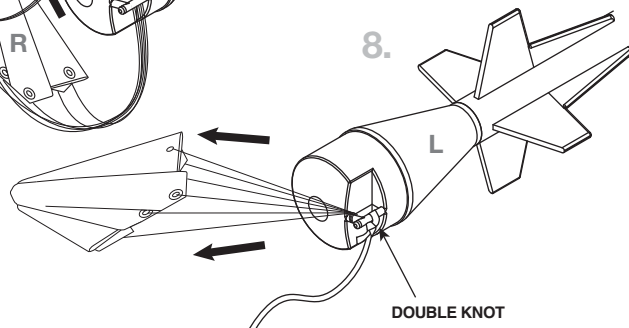
6.



7.

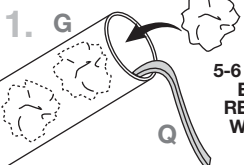


8.



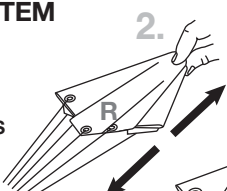
DOUBLE KNOT

PREPARE RECOVERY SYSTEM

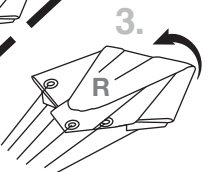


5-6 SQUARES
ESTES®
RECOVERY
WADDING

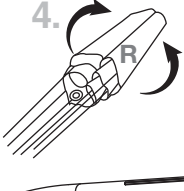
2.



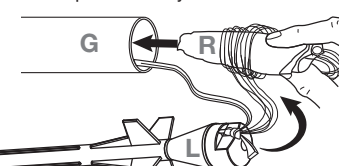
3.



4.



5. Wrap lines loosely.

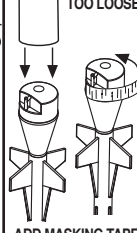


NOTE:

Recovery wadding and parachute must slide easily into body tube. If too tight, redo.

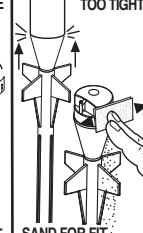
IF NOSE CONE FIT IS...

TOO LOOSE



ADD MASKING TAPE.

TOO TIGHT



SAND FOR FIT.

PREPARE ENGINE

USE 1 EACH

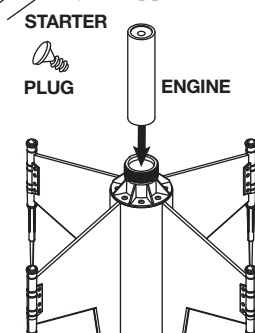


STARTER

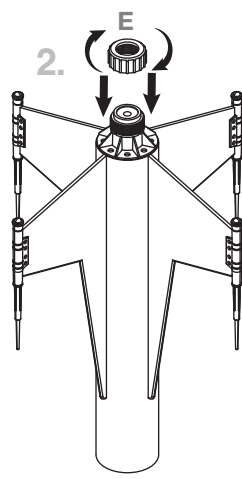
PLUG

ENGINE

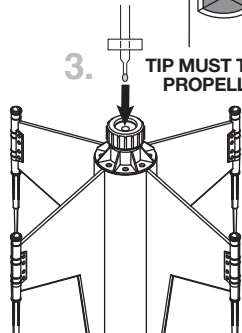
1.



2.

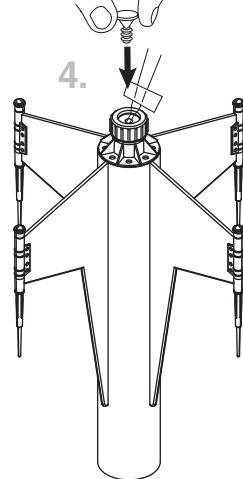


3.

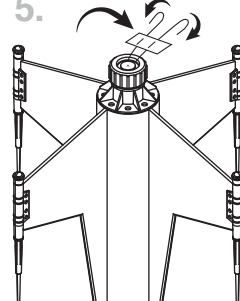


TIP MUST TOUCH
PROPELLANT

4.



5.



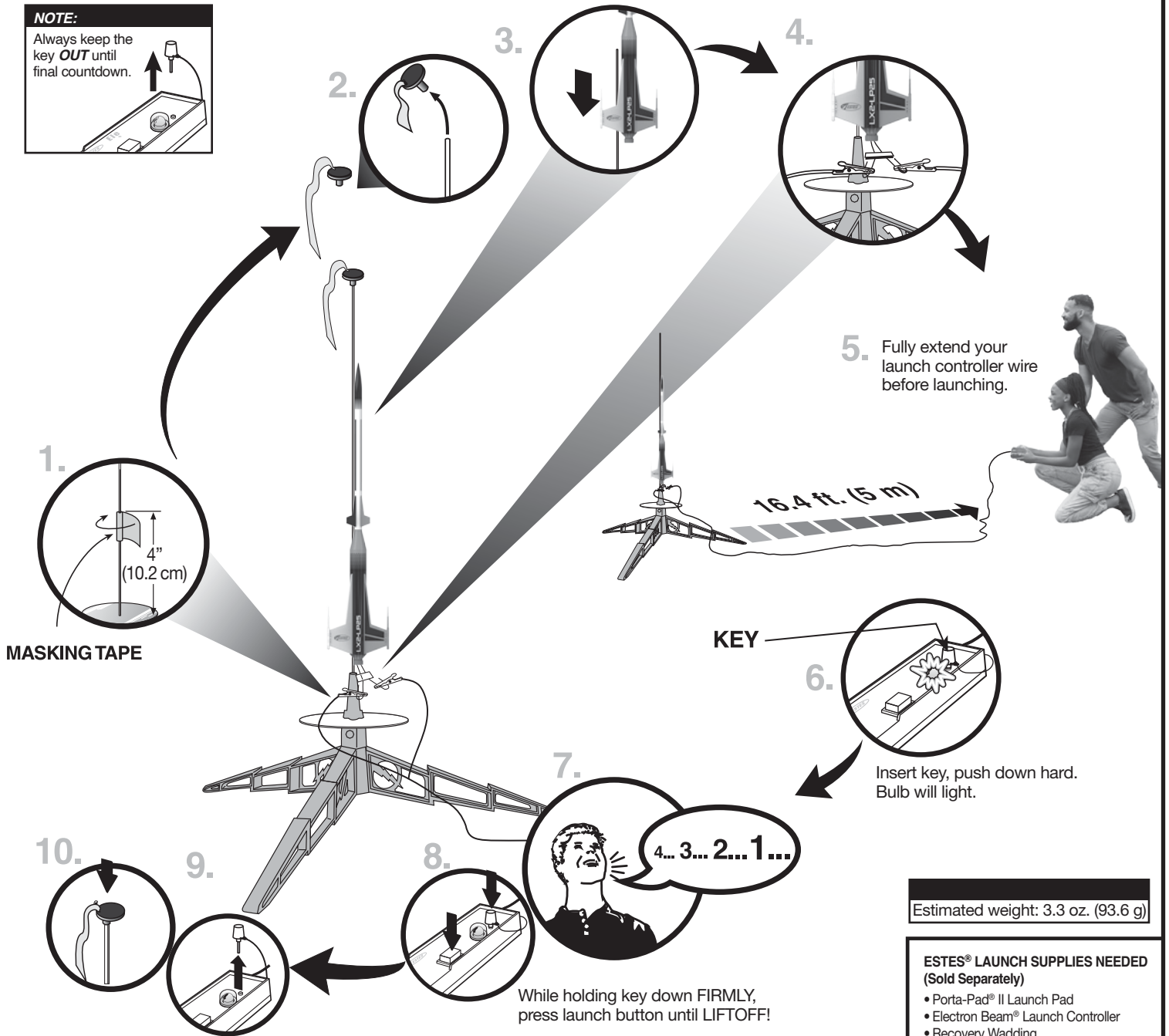
WARNING: FLAMMABLE

To avoid serious injury, read instructions & NAR Safety Code included with engines. **PREPARE YOUR ENGINE ONLY WHEN YOU ARE OUTSIDE AT THE LAUNCH SITE PREPARING TO LAUNCH.** If you do not use your prepared engine, remove the starter before storing your engine.

COUNTDOWN AND LAUNCH

NOTE:

Always keep the key **OUT** until final countdown.



Estimated weight: 3.3 oz. (93.6 g)

ESTES® LAUNCH SUPPLIES NEEDED (Sold Separately)

- Porta-Pad® II Launch Pad
- Electron Beam® Launch Controller
- Recovery Wadding
- Starters (with engines)
- Plugs (with engines)
- Estes® Engines: C5-3, C6-3

PRECAUTIONS



NAR SAFETY CODE



NO DRY GRASS OR WEEDS

PRE-LAUNCH CHECK For safety, never launch a damaged rocket. Check the rocket's body, nose cone and fins. Also, check the engine mount, recovery system and launch lug(s). Repair any damage before launching the rocket.

FLYING YOUR ROCKET Choose a large field (500 ft. [152 m] square) free of dry weeds and brown grass. The larger the launch area, the better your chance of recovering your rocket. Launch only with little or no wind and good visibility. Always follow the National Association of Rocketry (NAR) SAFETY CODE (enclosed).

MISFIRES TAKE THE KEY OUT OF THE CONTROLLER. WAIT ONE MINUTE BEFORE GOING NEAR THE ROCKET. Disconnect the micro-clips and remove the engine. Take the plug and starter out of the engine. A burned starter means the starter tip was not touching engine propellant. Install a new starter; be sure the tip is touching propellant inside the engine. Push the plug in place. Repeat steps under Countdown and Launch.

