

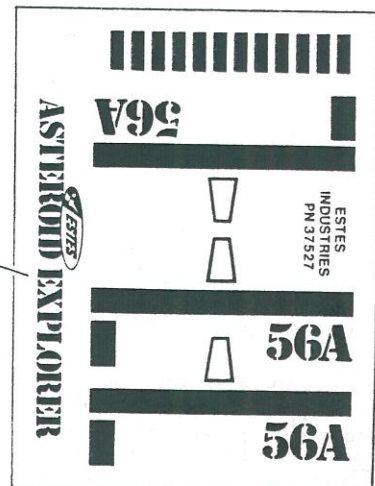
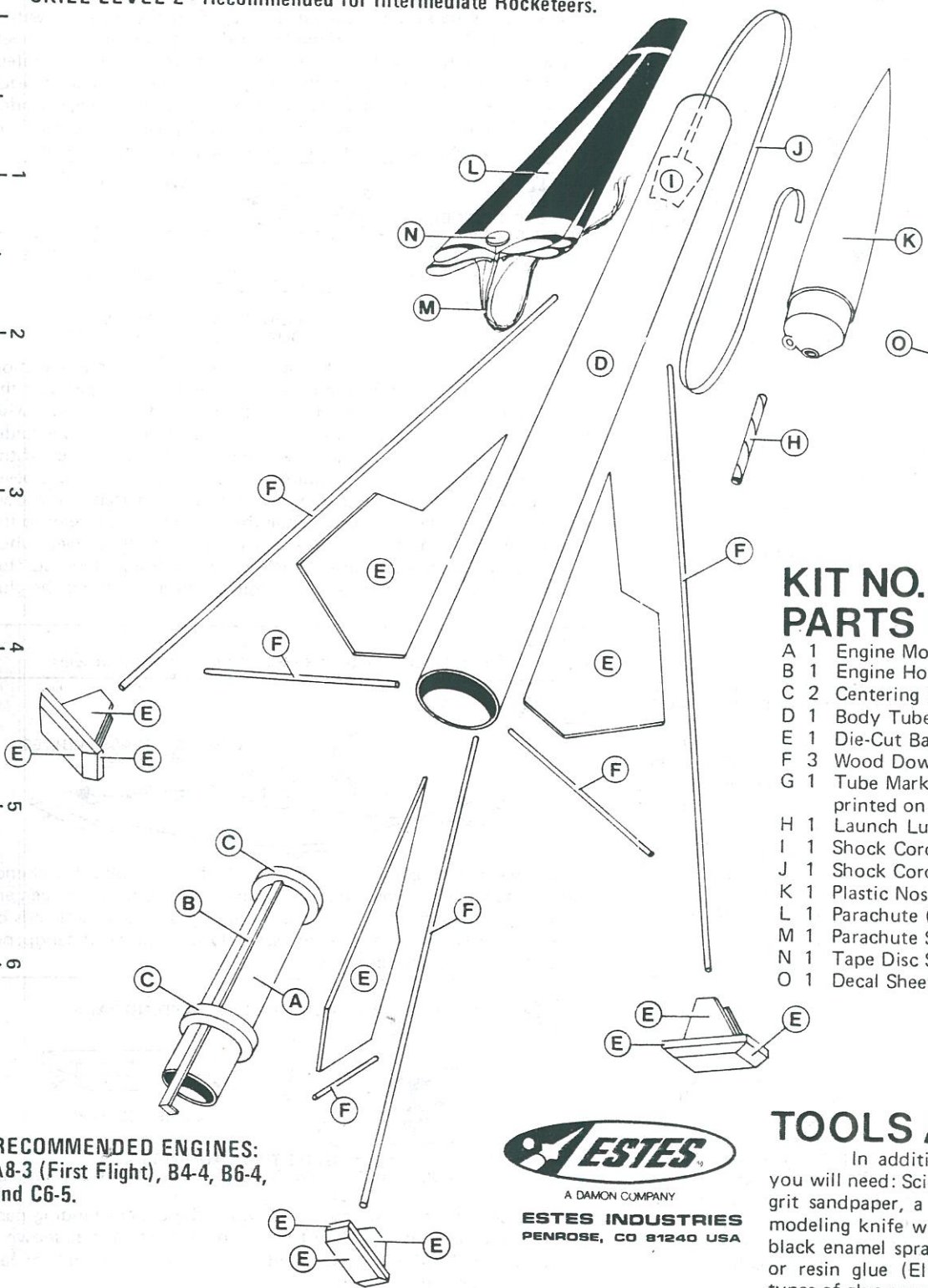
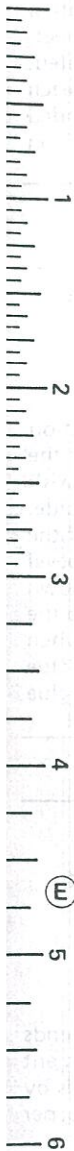


ASTEROID EXPLORER

SKILL LEVEL 2 - Recommended for Intermediate Rocketeers.

BEFORE YOU START

Read each step and study the accompanying drawings before doing any of the work called for in that step. Make sure you have all parts and materials. Check off each step as you complete it. Always test-fit parts together before applying glue. It will sometimes be necessary to sand edges of rings, tubes, etc. to obtain a proper fit. If you are in doubt about the relative size or location of some parts, refer back to this exploded view drawing for clarification. Adequate glue joints are very important for a flying model rocket. Follow the instructions carefully in this regard.



KIT NO. 1386 PARTS LIST

- A 1 Engine Mount Tube (type BT-20J) 30326
- B 1 Engine Hook (type EH-2) 35025
- C 2 Centering Ring (type AR-2050) 30164
- D 1 Body Tube (type BT-50W) 30372
- E 1 Die-Cut Balsa Sheet (type BF-864/1386). 32382
- F 3 Wood Dowel (1/8" diameter, 12" long .. 85901
- G 1 Tube Marking Guide (Not shown, printed on back of kit panel) 83427
- H 1 Launch Lug (type LL-2A) 38175
- I 1 Shock Cord Mount (type SCM-50) 84444
- J 1 Shock Cord (type SC-1) 85730
- K 1 Plastic Nose Cone (type PNC-50Y) 71009
- L 1 Parachute (type PK-12A) 85564
- M 1 Parachute Shroud Line (type SLT-72) .. 38237
- N 1 Tape Disc Strip (type TD-3F) 38406
- O 1 Decal Sheet (type KD-1386) 37527

RECOMMENDED ENGINES:
A8-3 (First Flight), B4-4, B6-4,
and C6-5.



A DAMON COMPANY
ESTES INDUSTRIES
PENROSE, CO 81240 USA

TOOLS AND MATERIALS

In addition to the parts included in this kit you will need: Scissors, pencil, ruler, fine or extra-fine grit sandpaper, a medium-size modeling paint brush, modeling knife with sharp blade, gloss grey and gloss black enamel spray paints, and household white glue or resin glue (Elmer's, Titebond, or similar). Other types of glue are not recommended.