



The World Leader in Model Rocketry
1295 H Street, Penrose CO 81240

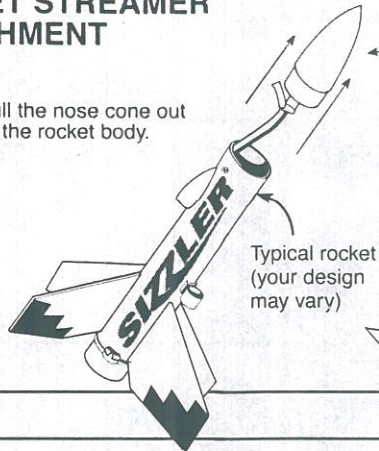
MIGHTY MITES™

READY TO FLY FLYING MODEL ROCKET INSTRUCTIONS

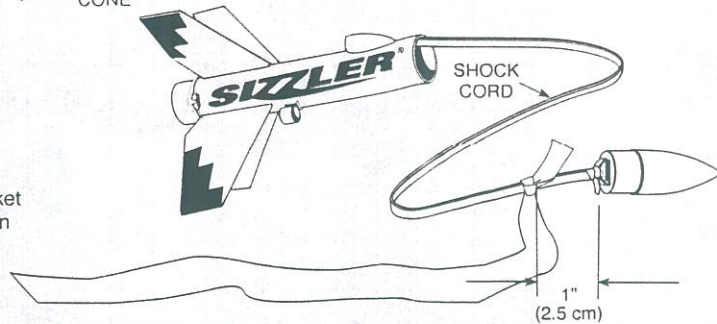
Use these instructions for each of your Mighty Mite™ rockets.

1. ROCKET STREAMER ATTACHMENT

A. Pull the nose cone out of the rocket body.

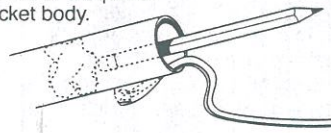


B. Measure 1" (2.5 cm) from the nose cone and tie streamer to shock cord with a double knot.



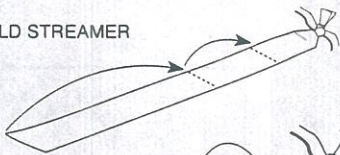
2. PREPARE STREAMER FOR FLIGHT

A. Loosely crumple and insert 1/4 of a square of recovery wadding into rocket body.



IMPORTANT:
Wadding must be in place and slide freely for rocket to work properly!

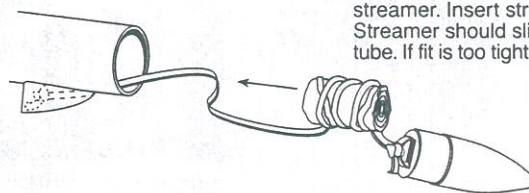
B. FOLD STREAMER



C. ROLL



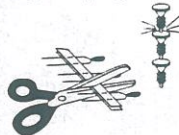
D. Wrap shock cord loosely around streamer. Insert streamer into rocket. Streamer should slide easily into body tube. If fit is too tight, unfold and repack.



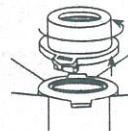
3. PREPARE ENGINE FOR FLIGHT

WARNING : FLAMMABLE
BEFORE PROCEEDING, READ INSTRUCTIONS AND NAR SAFETY CODE INCLUDED WITH ENGINES. PREPARE YOUR ENGINE **ONLY** WHEN YOU ARE **OUTSIDE** AT THE LAUNCH SITE PREPARING TO LAUNCH! If you do not use your prepared engine, remove the igniter before storing your engine.

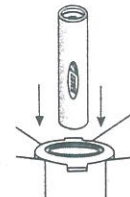
A. Separate igniter and igniter plug.



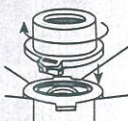
B. Twist off retainer ring at rear of rocket.



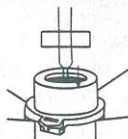
C. Slide engine into rocket body as shown.



D. Twist retainer ring into locked position to hold engine in place.



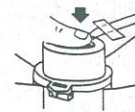
E. Hold rocket upside down and drop in igniter. Igniter must touch propellant.



F. Insert igniter plug.



G. Firmly push igniter plug all the way in.



H. Bend igniter wires back as shown.

