

INCHES

HONEST JOHN

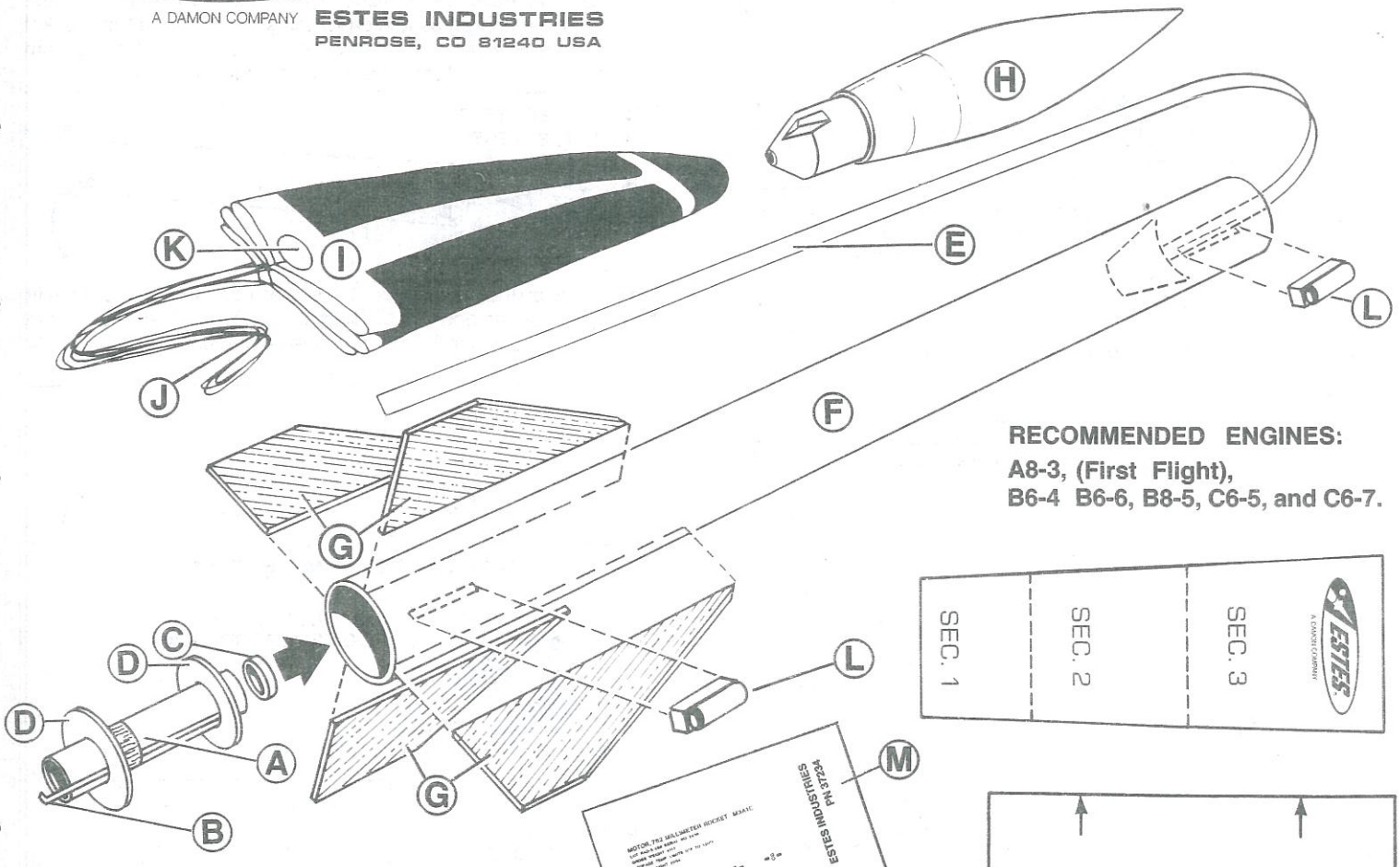
SKILL LEVEL 2 - Suggested For Intermediate Modelers



A DAMON COMPANY **ESTES INDUSTRIES**
PENROSE, CO 81240 USA

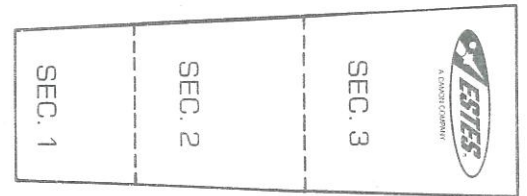
BEFORE YOU START

Read all instructions before beginning work on your model. Make sure you have all parts and materials. When you are thoroughly familiar with the assembly procedure, begin construction. Check off each step as you complete it. In each step, test-fit the parts together before applying any glue. If some part doesn't fit properly, sand lightly or build up as required for precision assembly.



RECOMMENDED ENGINES:

A8-3, (First Flight),
B6-4 B6-6, B8-5, C6-5, and C6-7.

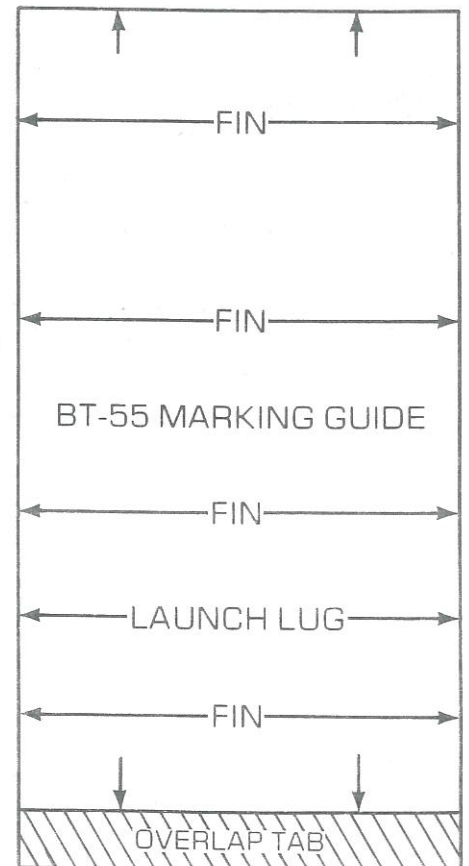


PARTS LIST KIT NO. 1919

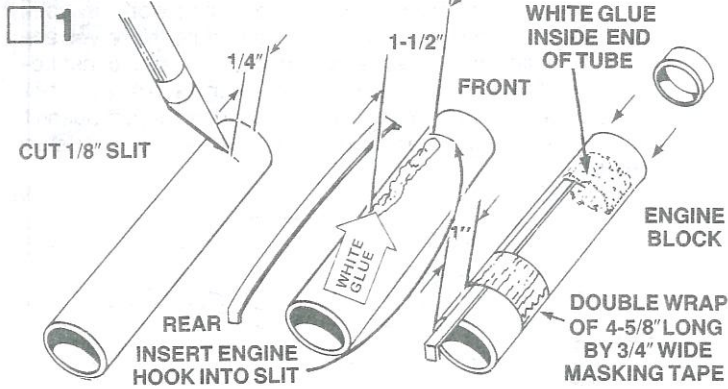
A	1 Engine Mount Tube (BT-20J)	30326
B	1 Engine Hook (EH-2)	35025
C	1 Engine Block (AR-520)	30162
D	1 Adapter Ring Set (TA-1327)	30090
E	1 Shock Cord (SC-1)	85730
F	1 Body Tube (BT-55KA)	30387
G	1 Die-Cut Balsa Fin Sheet	32619
H	1 Plastic Nose Cone (PNC-55HJ)	72058
I	1 Parachute (PK-12)	85564
J	1 Shroud Line (SLT-72)	38237
K	1 Tape Discs Set (TD-3F)	38406
L	1 Launch Lug (LL-2A)	38175
M	1 Decal (KD-1919)	37234

TOOLS AND MATERIALS

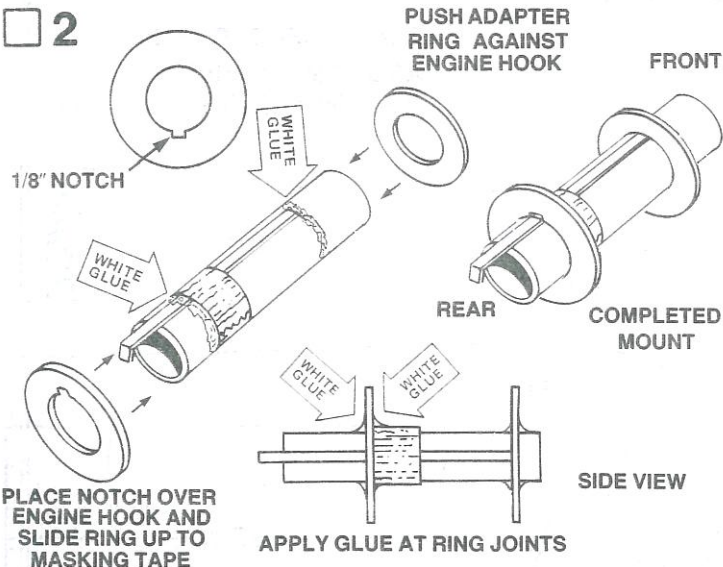
In addition to the parts included in the kit you will need an X-Acto type modeling knife, white glue (Elmer's, Titebond, or similar), scissors, pencil, ruler, masking tape, fine and extra-fine grit sandpaper, sanding sealer, and a medium-size modeling paint brush. To paint your model we recommend gray primer and olive drab spray paint. Dull and gloss clear spray may be used to protect the decals. For easy and positive alignment of the fins on your model, we recommend the use of Estes' Fin Alignment Guide part number 2231.



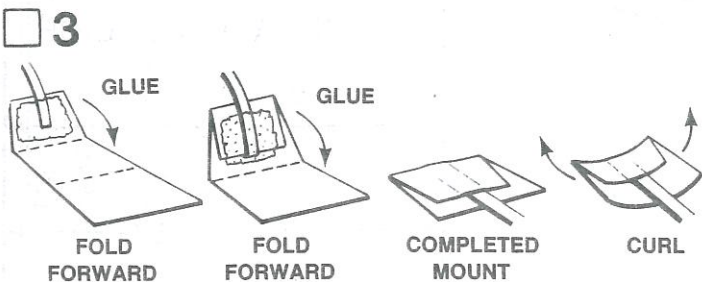
ASSEMBLY INSTRUCTIONS



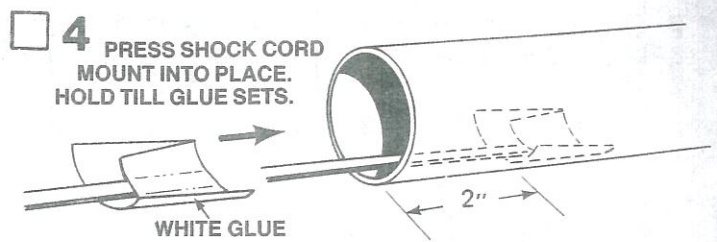
Cut a 1/8" long slit in the engine mount tube (Part A), 1/4" from one end as shown. Apply a 1-1/2" line of glue straight along the tube as shown. Push one end of the engine hook (part B) into the slit and press the main part of the hook into the glue. Cut a 4-5/8" long piece of 3/4" wide masking tape. Wrap the tape twice around the engine tube-engine hook assembly so the tape is 1" from the rear of the tube. Run a line of white glue inside the front end of the tube. Push the engine block (part C) into the front of the tube up to the engine hook end inside the tube. Set the completed engine tube assembly aside to dry.



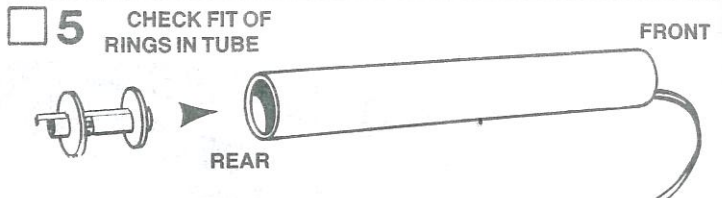
Carefully separate the two adapter rings (part D) from the die-cut card sheet. Slide the notched adapter ring over the rear of the engine tube up to the masking tape so that the notch is over the engine hook. Slide the other adapter ring over the front of the engine tube up to the engine hook as shown. Glue the rings in place by applying a line of glue where ring meets tube all around both sides of each ring. Set the assembly on one end while the glue dries.



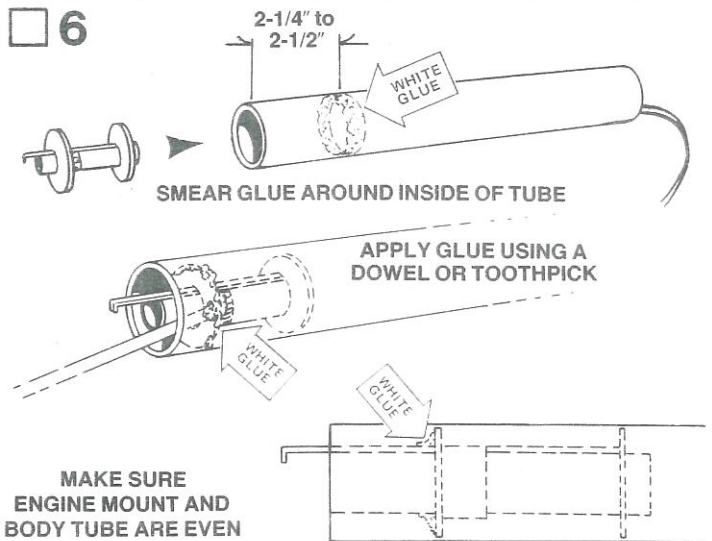
Cut out the shock cord mount found on page 1. Crease it on the dotted lines by folding. Spread glue on section 1 and lay one end of the shock cord (part E) into the glue. Fold over and apply glue to the back of section 1 and the exposed part of section 2. Lay the shock cord as shown and fold over again. Clamp the unit together with your fingers until the glue sets.



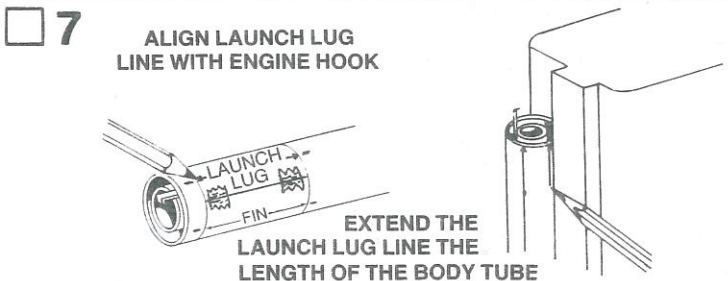
Smear glue over the entire backside of the shock cord mount. Hold the mount as shown and press it into place inside one end of the rocket body tube (part F). Make sure the front of the mount is at least 2" from the end of the tube. Hold the mount in place until the glue sets.



When the glue on the engine mount has dried completely, check the fit of the rings inside the body tube. The rings should slide easily into the tube. If the fit is tight, sand the outer edges of the rings until they slide easily in the body tube.



Apply a ring of glue around inside of rear end (the end opposite the shock cord mount) of body tube about 2-1/4" to 2-1/2" from the end of the tube. Slide the engine mount unit, engine block first, into the body tube so that the engine tube and body tube are even. Do not pause while inserting the engine mount or the glue may "grab" with the mount in the wrong position. Finish the installation by applying glue to the joint between the rear ring and the body tube. (Use a dowel or toothpick to apply the glue.)



Cut out the body tube marking guide found on page 1 of the instruction sheet. Wrap the guide tightly around the rear of the body tube. Align the guide lines and tape the guide together. Line up the launch lug line with the engine hook. Mark the fin lines and the launch lug lines on the body tube. Remove the guide. Press the body tube firmly against the inside of a door frame as shown. Draw a line through each pair of marks 4" up from the rear.