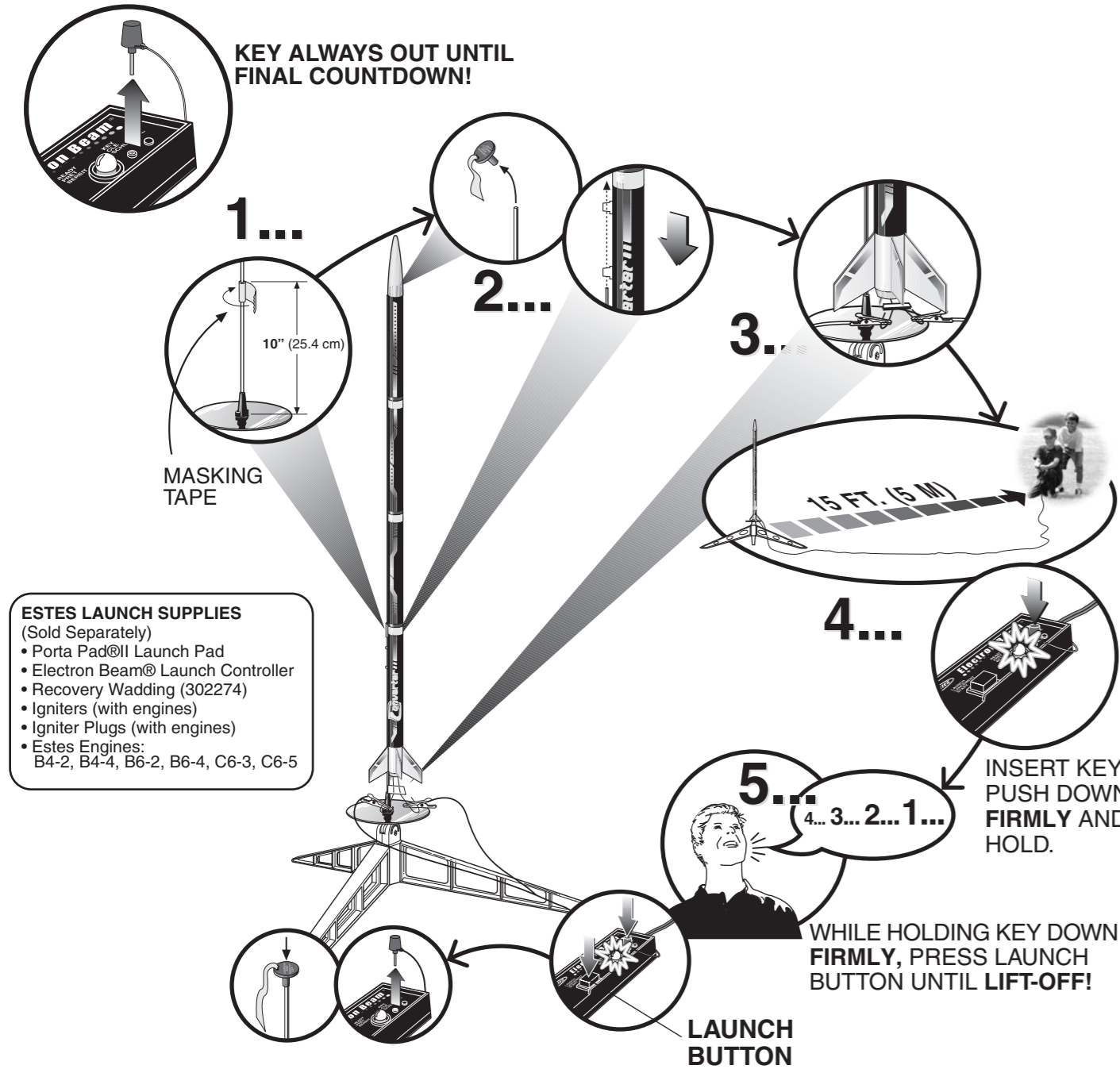
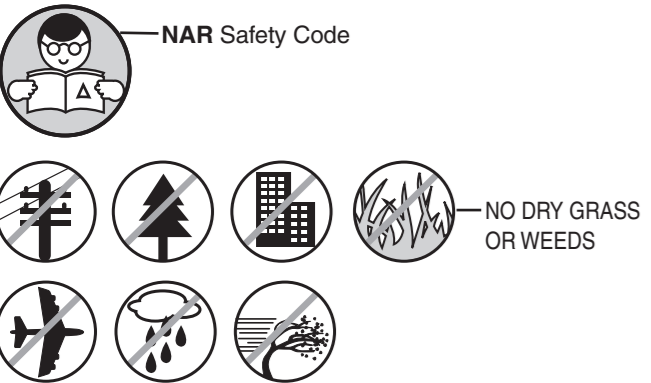


COUNTDOWN AND LAUNCH



- ESTES LAUNCH SUPPLIES**
(Sold Separately)
- Porta Pad® II Launch Pad
 - Electron Beam® Launch Controller
 - Recovery Wadding (302274)
 - Igniters (with engines)
 - Igniter Plugs (with engines)
 - Estes Engines:
B4-2, B4-4, B6-2, B6-4, C6-3, C6-5

PRECAUTIONS



PRE-LAUNCH CHECK
For safety, never launch a damaged rocket. Check the rocket's body, nose cone and fins. Also, check the engine mount, recovery system and launch lug(s). Repair any damage before launching the rocket.

FLYING YOUR ROCKET
Choose a large field (250 ft. [76 m] square) free of dry weeds and brown grass. The larger the launch area, the better your chance of recovering your rocket. Football fields and playgrounds are great. Launch only with little or no wind and good visibility.

Always follow the enclosed National Association of Rocketry (NAR) SAFETY CODE.

MISFIRES
TAKE THE KEY OUT OF THE CONTROLLER. WAIT ONE MINUTE BEFORE GOING NEAR THE ROCKET! Disconnect the igniter clips and remove the engine. Take the plug and igniter out of the engine. If the igniter has burned, it worked but did not ignite the engine because it was not touching the propellant inside the engine. Put a new igniter all the way inside the engine without bending it. Push the plug in place. Repeat the steps under Countdown and Launch.

ESTES
www.estesrockets.com
www.esteseducator.com
ESTES-COX CORP.
1295 H Street
Penrose, CO 81240
PRINTED IN CHINA

CONVERTER™

FLYING MODEL ROCKET KIT INSTRUCTIONS
KEEP FOR FUTURE REFERENCE #2029

ASSEMBLY TIP
Read all instructions before beginning work on your model. Make sure you have all parts and supplies.
TEST-FIT ALL PARTS TOGETHER BEFORE APPLYING ANY GLUE. If any parts don't fit properly, sand as required for precision assembly.

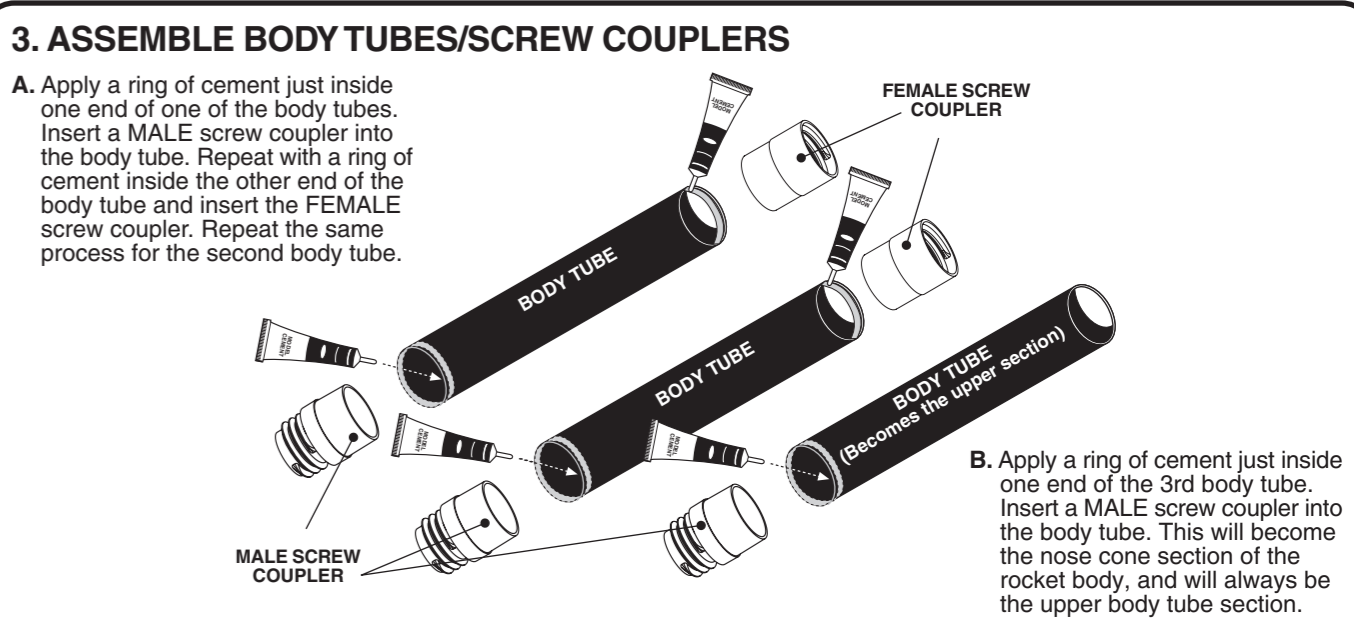
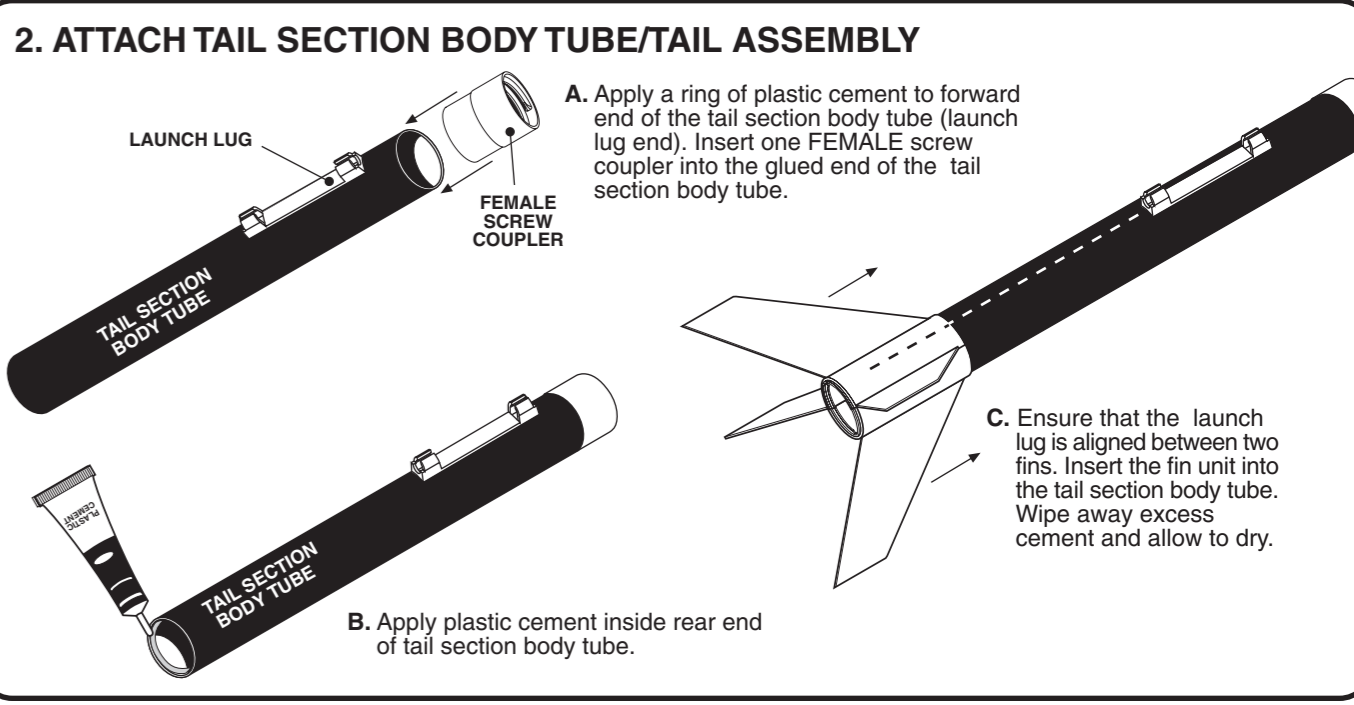
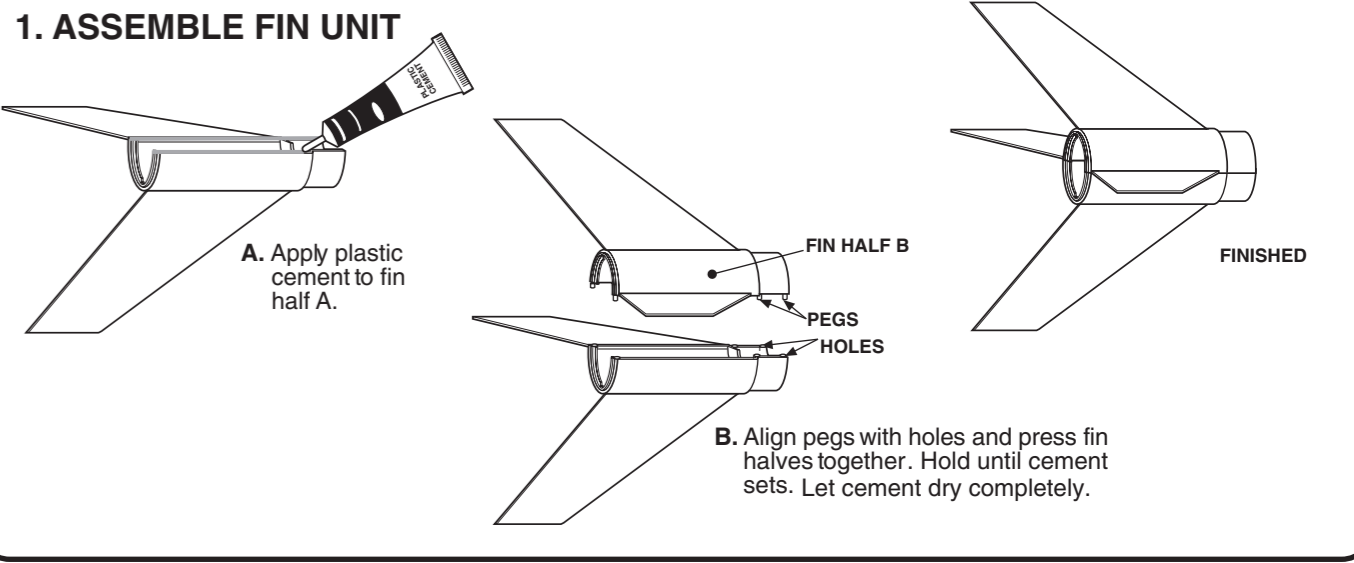
HELPFUL HINT: IF NOSE CONE FIT IS...

TOO LOOSE ADD MASKING TAPE.	TOO TIGHT SAND FOR FIT.
---------------------------------------	-----------------------------------

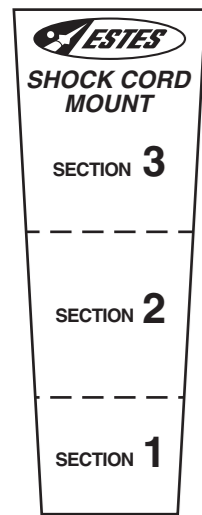
PARTS Locate the parts shown below and lay them out on the table in front of you. DO NOT USE THIS DRAWING TO ASSEMBLE YOUR ROCKET.

- NOSE CONE PNC-56 (1) 72013
- RUBBER SHOCK CORD 1/4" X 30" (1) (38369)
- ASSEMBLED PARACHUTE 18" (1) (35802)
- FIN UNIT SET (1) (61942)
- LOCK RING (1)
- FIN HALF B (1)
- FIN HALF A (1)
- TAIL SECTION BODY TUBE 8.25" (21 cm) (1) (31665)
- BODY TUBE 6" (15.2 cm) (1) (31710)
- BODY TUBE 6" (15.2 cm) (1) (31710)
- BODY TUBE 6" (15.2 cm) (1) (31710)
- FEMALE SCREW COUPLER (3) (61944)
- MALE SCREW COUPLER (3) (61943)
- DECAL SHEET (1) (61855)

- SUPPLIES** In addition to the parts included in the kit you will also need:
- SCISSORS
 - PENCIL
 - FINE SANDPAPER
 - CARPENTER'S GLUE
 - MODELING KNIFE
 - MASKING TAPE
 - PLASTIC CEMENT
- ALL GLUED AREAS ARE SHADED IN GRAY



4. ATTACH SHOCK CORD AND MOUNT



A. Carefully cut out shock cord mount at left.

B. Lay end of shock cord on sections 2 and 3 of mount. Apply glue to section 2. Fold section 1 over section 2.

C. Apply glue to section 3. Fold forward.

D. Squeeze tightly and hold until glue sets.

E. Glue mount 1" (25 mm) inside upper body tube. Hold until glue sets. Let dry.

5. ATTACH NOSE CONE AND PARACHUTE

CAUTION:
DO NOT CUT OFF EYELET OF NOSE CONE.

A. Clean the eye of the nose cone.

B. Tie shock cord to nose cone with a double knot.

C. Form loop with parachute shroud lines.

D. Lay shock cord over loop about 3/4" (19 mm) from nose cone.

E. Pass parachute through loop.

F. Pull tight.

6. APPLY DECALS

A. Assemble as a 4-piece rocket and apply decals as shown. This assures that the labels line up when flying as a 2-piece or 3-piece rocket.



7. ROCKET CONFIGURATIONS:

You can easily change the length of your rocket by screwing different body tube sections together. You can fly a 2-section, 3-section or 4-section rocket.

A. 2-Piece Rocket

A. Screw the nose cone section onto the tail assembly.

TAIL SECTION

NOSE CONE SECTION

TAIL SECTION

RECOMMENDED ENGINES:
B4-2, B4-4, B6-2, B6-4, C6-3, C6-5

B. 3-Piece Rocket

A. Screw either body section onto the tail assembly.

TAIL SECTION

BODY TUBE

B. Screw the nose cone section onto the body section.

NOSE CONE SECTION

TAIL SECTION

BODY TUBE

NOSE CONE SECTION

RECOMMENDED ENGINES:
B6-2, B6-4, C6-3, C6-5

C. 4-Piece Rocket

A. Screw either body section onto the tail assembly.

TAIL SECTION

BODY TUBE

B. Screw the remaining body section onto the body.

NOSE CONE SECTION

NOSE CONE SECTION

BODY TUBE

BODY TUBE

RECOMMENDED ENGINES:
B6-2, B6-4, C6-3, C6-5

TAIL SECTION

8. PREPARE PARACHUTE FOR FLIGHT

A. Insert 6-8 loosely crumpled squares of recovery wadding.

B. Spike parachute.

C. Fold.

D. Roll.

E. Wrap lines loosely. Insert chute, shock cord and nose cone into body tube.

IMPORTANT: Both recovery wadding and parachute must slide easily into body. (If fit is too tight, undo and repack).

NOTE: Only Estes Wadding (302274) recommended.

WARNING: FLAMMABLE
To avoid serious injury, read instructions & NAR Safety Code included with engines before proceeding. **PREPARE YOUR ENGINE ONLY WHEN YOU ARE OUTSIDE AT THE LAUNCH SITE PREPARING TO LAUNCH!** If you do not use your prepared engine, remove the igniter before storing your engine.

A. Slide engine into rear of rocket as shown.

B. Twist engine lock ring into locked position to hold engine in place.

C. Separate igniter and igniter plug.

D. Hold rocket upright, drop in igniter. **IGNITER MUST TOUCH PROPELLANT.**

E. Insert igniter plug.

F. Firmly push all the way in.

G. Bend igniter wires as shown.