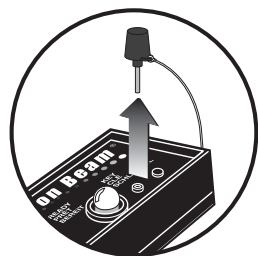
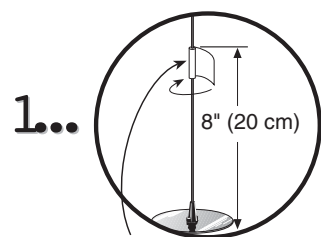


COUNTDOWN AND LAUNCH



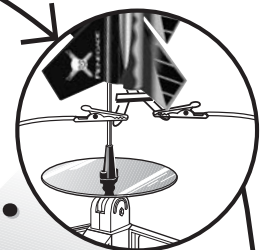
KEY ALWAYS OUT UNTIL FINAL COUNTDOWN!



Masking Tape



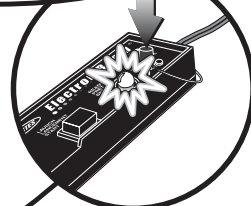
2...



3...



4...



5...

4... 3... 2... 1...

INSERT KEY. PUSH DOWN AND HOLD.

HOLD KEY DOWN AND PRESS LAUNCH BUTTON UNTIL LIFT-OFF!

LAUNCH BUTTON

LAUNCH SUPPLIES (Sold Separately)

- Porta Pad® II Launch Pad
- Electron Beam® Launch Controller
- Recovery Wadding
- Igniters (with Engines)
- Igniter Plugs (with Engines)
- Recommended Estes® Engines:
 - Single Stage A8-3, B4-4, B6-4, C6-5
 - Two Stage Flights: Booster Stage - B6-0, C6-0,
 - Upper Stage - A8-5, B6-4, B6-6, C6-5, C6-7



www.estesrockets.com

ESTES INDUSTRIES
1295 H Street
Penrose, CO 81240
PRINTED IN CHINA



FLYING MODEL ROCKET KIT INSTRUCTIONS
KEEP FOR FUTURE REFERENCE.

EST 2109



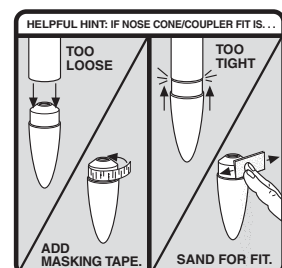
ASSEMBLY TIP: Read all instructions before beginning work on your model. Make sure you have all parts and supplies.

TEST-FIT ALL PARTS TOGETHER BEFORE APPLYING ANY GLUE! If any parts don't fit properly, sand as required for precision assembly.

PARTS:

Locate the parts shown below and lay them out on the table in front of you. DO NOT USE THIS DRAWING TO ASSEMBLE YOUR ROCKET.

- BT-60 Body Tube (1) 18" (45.7 cm) (30401)
- BT-5 Body Tube (2) .75" (19 mm) (30409)
- BT-50 Body Tubes (2) 5" (12.7 cm) (30415)
- BT-20 Engine Mount Tubes (2) 2.75" (7 cm) (30408)
- BT-60 Booster Stage Body Tube (1) 3.25" (8.25 cm) (30404)
- Tube Coupler JT-60 (Red) (1) (30176-5)
- Die Cut Balsa Fins (1) (32212)
- Die Cut Balsa Fins (1) (32213)
- Centering Ring Cards (2) RA 2060 (30128)
- Clay Weight (1) (85704)
- Launch Lug (1) 1/8" x 2 3/8" (38178)
- Adapter Rings (2) RA-520 (Green) (30162-2)
- Assembled 12" (30 cm) Parachute (1) (35801)
- Decal Sheet (1) (60549)
- Die Cut Disc Card (1) (37172)
- Plastic Nose Cone (1) PNC-60CP (60541)
- Plastic Nose Cones (2) PNC-50KA (71028)
- Plastic Nose Cones (4) PNC-5A (72600)
- Shock Cord (1) 1/4" x 24" (38383)



PRECAUTIONS

NAR Safety Code



NO DRY GRASS OR WEEDS

FLYING YOUR ROCKET

Choose a large field (500 ft. [152 m] square) free of dry weeds and brown grass. The larger the launch area, the better your chance of recovering your rocket. Football fields and playgrounds are great. Launch only with little or no wind and good visibility.

Always follow the National Association of Rocketry (NAR) Safety Code.

MISFIRES

TAKE THE KEY OUT OF THE CONTROLLER. WAIT ONE MINUTE BEFORE GOING NEAR THE ROCKET! Disconnect the igniter clips and remove the engine. Take the plug and igniter out of the engine. If the igniter has burned, it worked but did not ignite the engine because it was not touching the propellant inside the engine. Put a new igniter all the way inside the engine without bending it. Push the plug in place. Repeat the steps under Countdown and Launch.

SUPPLIES

In addition to the parts included in the kit you will also need:

